

---

# **Safety Assessment of Vitis Vinifera (Grape)-Derived Ingredients as Used in Cosmetics**

---

Status: Final Report for public distribution  
Release Date: October 5, 2012  
Panel Meeting Date: September 10-11, 2012

The 2012 Cosmetic Ingredient Review Expert Panel members are: Chair, Wilma F. Bergfeld, M.D., F.A.C.P.; Donald V. Belsito, M.D.; Ronald A. Hill, Ph.D.; Curtis D. Klaassen, Ph.D.; Daniel C. Liebler, Ph.D.; James G. Marks, Jr., M.D., Ronald C. Shank, Ph.D.; Thomas J. Slaga, Ph.D.; and Paul W. Snyder, D.V.M., Ph.D. The CIR Director is F. Alan Andersen, Ph.D. This report was prepared by Monice M. Fiume, Senior Scientific Analyst/Writer.

## **ABSTRACT**

*The Expert Panel assessed the safety of 24 Vitis vinifera (grape)-derived ingredients and found them safe in the present practices of use and concentration in cosmetics. These ingredients are most frequently reported to function in cosmetics as skin conditioning agents. Some of these ingredients are reported to function as antioxidants, flavoring agents, and/or colorants. The Panel reviewed the available animal and clinical data to determine the safety of these ingredients. Additionally, some constituents of grapes have been assessed previously for safety as cosmetic ingredients; others are compounds that have been discussed in previous CIR safety assessments.*

## **INTRODUCTION**

This report is a safety assessment of the following 24 *Vitis vinifera* (grape)-derived ingredients for use in cosmetic formulations:

Vitis Vinifera (Grape)  
Vitis Vinifera (Grape) Bud Extract  
Vitis Vinifera (Grape) Flower Extract  
Vitis Vinifera (Grape) Fruit Extract  
Vitis Vinifera (Grape) Fruit Powder  
Vitis Vinifera (Grape) Fruit Water  
Vitis Vinifera (Grape) Juice  
Vitis Vinifera (Grape) Juice Extract  
Vitis Vinifera (Grape) Leaf Extract  
Vitis Vinifera (Grape) Leaf Oil  
Vitis Vinifera (Grape) Leaf/Seed/Skin Extract  
Vitis Vinifera (Grape) Leaf Water

Vitis Vinifera (Grape) Leaf Wax  
Vitis Vinifera (Grape) Root Extract  
Vitis Vinifera (Grape) Seed  
Vitis Vinifera (Grape) Seed Extract  
Vitis Vinifera (Grape) Seed Powder  
Vitis Vinifera (Grape) Shoot Extract  
Vitis Vinifera (Grape) Skin Extract  
Vitis Vinifera (Grape) Skin Powder  
Vitis Vinifera (Grape) Vine Extract  
Vitis Vinifera (Grape) Vine Sap  
Hydrolyzed Grape Fruit  
Hydrolyzed Grape Skin

These ingredients are reported to have many functions in cosmetics; they are reported most frequently to function as skin conditioning agents. Some of these ingredients are reported to function as antioxidants, flavoring agents, and/or colorants. In the Food and Drug Administration (FDA) Food Labeling regulations (21CFR101) subpart C, which addresses Specific Nutrition Labeling Requirements and Guidelines, grapes are listed as one of the 20 most frequently consumed raw fruits.

The safety of *Vitis Vinifera* (Grape) Seed Oil and Hydrogenated Grapeseed Oil was reviewed previously in 2011 by the Cosmetic Ingredient Review (CIR) Expert Panel in the Safety Assessment of Plant-Derived Fatty Acid Oils as Used in Cosmetics, at which time the Panel concluded that these ingredients are safe as used in cosmetics.<sup>1</sup> Consequently, these two ingredients are not included in this safety assessment.

The detailed chemical composition of *Vitis vinifera* is given later in this assessment. Some of the constituents of grape, such as ascorbic acid, biotin, malic acid, etc., are cosmetic ingredients for which a CIR safety assessment is available; others are compounds that have been discussed in previous CIR safety assessments.

Many studies have been conducted with *Vitis vinifera* (grape)-derived ingredients with regard to health claims, anti-oxidant activity, and so forth. This safety assessment only includes studies and study-types that relate directly to the safety of the cosmetic use of these ingredients.

Note: In many of the published studies, it is not known how the substance being tested compares to the cosmetic-grade ingredient. Therefore, if it is not known whether the ingredient being discussed is a cosmetic ingredient, the test substance will be identified as “grape...” (e.g. grape seed extract); if it is known that the substance is a cosmetic ingredient, the terminology “*Vitis Vinifera* (Grape)...” (e.g. *Vitis Vinifera* (Grape) Seed Extract) will be used.

## **CHEMISTRY**

### **Definition**

The definitions of the *Vitis vinifera* (grape)-derived ingredients are provided in Table 1. *Vitis vinifera* is also known as wine grape, European grape,<sup>2</sup> and grapevine.<sup>3</sup>

### **Chemical and Physical Properties**

Chemical and physical property data are provided in Table 2.

## Composition

A detailed list of chemical constituents by plant part is presented in Table 3, and a more focused listing of constituents of *Vitis vinifera* is provided in Table 4. Table 5 provides the conclusions from CIR safety assessments that exist for some of the constituents of grape. Table 6 includes information on the toxicity of some constituents.

Grapes contain fruit acids, and the unripe fruit contains 34 ppm oxalic acid.<sup>2,4</sup> Grape seeds contain 6-20% oil. Phenols are the third most-abundant constituent in grapes; carbohydrates and fruit acids are the most- and second most-abundant, respectively.<sup>5</sup> The total extractable phenolics in grapes are present at  $\leq 10\%$  in the pulp, 60-70% in the seeds, and 28-35% in the skin.

The amount of a constituent present in the plant varies with the region in which it is grown.<sup>4</sup> For example, fruit of grapes from Africa and Asia contained 50.0  $\mu\text{g}$   $\beta$ -carotene equivalents per 100 g of fruit while elsewhere trace  $\beta$ -carotene equivalent were present in the fruit. The cultivar, climate condition, and degree of maturation also affect the composition, as does whether the grapes are red or white.<sup>5</sup>

It has also been shown that the amount of a constituent present in an extract is dependent on the medium used during extraction and the variety of *Vitis vinifera* used.<sup>6</sup> For example, a red grape methanolic extract, red grape water extract, white grape methanolic extract, and white grape water extract each contained 0.22, 0.04, 0.01, and 0.02 mg/g trans-resveratrol, respectively; 0.9, 0.35, 2.25, and 4.09 mg/g (+)-catechin, respectively; 1.1, 0.32, 1.08, and 2.10 mg/g (-)-epicatechin, respectively; and 0, 0.13, 0.04, and 0.03 mg/g quercetin, respectively.

Melatonin (*N*-acetyl-5-methoxytryptamine) is present in grapes.<sup>3</sup> Depending on variety and location, levels of melatonin in grape skin have ranged from 0.005-1.2 ng/g. The stage of growth also affects the amount present. Studies have indicated that melatonin may also be present in the flesh and seeds of grapes.

### *Vitis Vinifera* (Grape) Fruit Extract

Fruit acids, sugars, minerals, pectin, tannins, proteins, anthocyanins, waxes, flavonoids, xanthophylls, carotene, vitamins, polysaccharides, aromatic substances, and procyanidins are part of the composition of *Vitis Vinifera* (Grape) Fruit Extract.<sup>7</sup>

### *Vitis Vinifera* (Grape) Juice

A commercial brand grape juice contained 4.4 mg/L quercetin and 6.2 mg/L myricetin.<sup>8</sup>

### *Vitis Vinifera* (Grape) Leaf Extract

Potassium and calcium bitartrate, calcium malate, fruit acids, sugar, flavonoids, and tannins are part of the composition of *Vitis Vinifera* (Grape) Leaf Extract.<sup>9</sup>

### *Vitis Vinifera* (Grape) Seed Extract

The main constituents of grape seeds are reported to be phenolic compounds. Those phenolic compounds from standardized grape seed extracts are reported to be 92-95% oligomeric proanthocyanidins.<sup>10</sup> Proanthocyanidin structures vary depending upon the source of the flavanol(s) building blocks (monomer units), the degree of oligomerization (how many flavanol repeat units), and the presence of modifications (such as esterification) of the 3-hydroxyl group.<sup>11</sup> The most prominent grape seed extract proanthocyanidin is depicted in Figure 1.<sup>10</sup> Catechin, epicatechin, and taxifolin are the primary flavanols present in grape seeds, and comprise the majority of the remaining phenols in grape seed extracts. (Figure 2). Heating of oligomeric proanthocyanidins, under acidic conditions, leads to the release of anthocyanins, and in turn, flavanols. Accordingly, the length of oligomeric proanthocyanidins and the concentration of flavanols in grape seed extracts are highly dependent on the extraction techniques used.

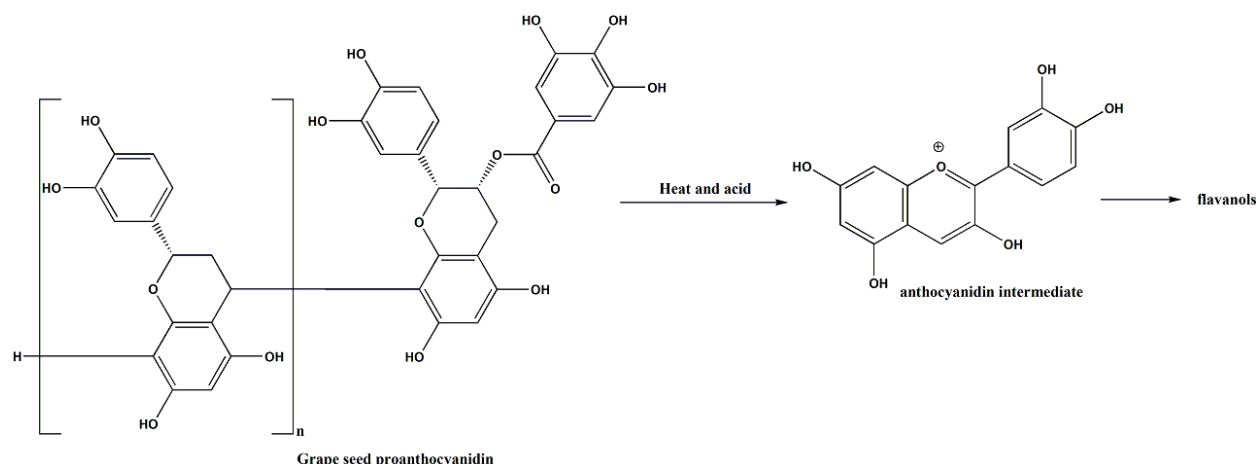


Figure 1. Grape seed acid proanthocyanidin

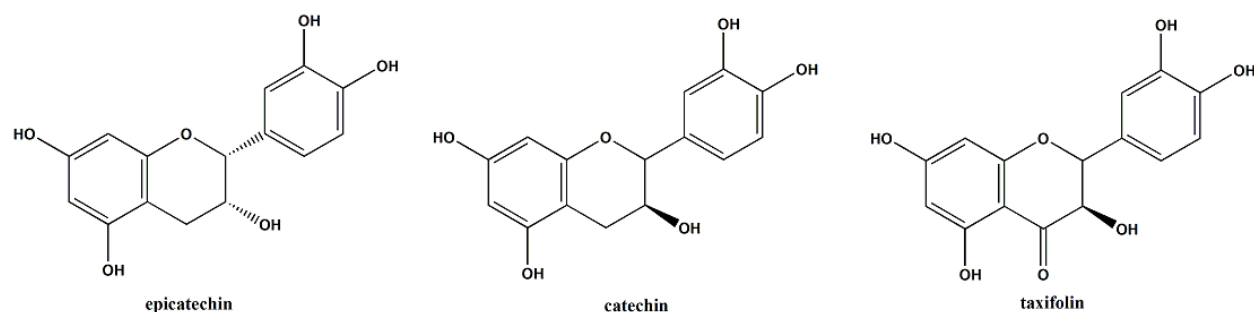


Figure 2. Primary flavanols in grape seeds

Grape seed oligomeric proanthocyanidins (United States Pharmacopeia [USP]-grade for dietary supplements) contain no more than 10 ppm heavy metals, no more than 19.0% catechin and epicatechin on the anhydrous basis, no more than 8.0% water, and no more than 2% water-insoluble fraction.<sup>12</sup>

*Vitis Vinifera* (Grape) Seed Extract, as the trade name ActiVin, contains 54% dimeric, 13% trimeric, and 7% tetrameric oligomeric proanthocyanidins and a small amount of catechin derivatives, flavonoids, and other oligomeric proanthocyanidins.<sup>13</sup>

#### *Vitis Vinifera* (Grape) Skin Extract

Grape skin extract (enocianina) is an approved food color additive exempt from batch certification. The FDA describes the color additive as containing the common components of grape juice: anthocyanins, tartaric acid, tannins, sugars, and minerals (21CFR73.170). A small amount of residual sulfur dioxide may be present following aqueous (aq.) extraction in the presence of sulfur dioxide. The grape anthocyanins are usually either monoglycerides or diglycosides.<sup>14</sup> The Food Chemicals Codex states the primary color components of grape skin extract are anthocyanins, such as the glucosides of malvidin, peonidin, petunidin, delphinidin, or cyanidin. Food-grade grape skin extract is to contain no more than 1 mg/kg arsenic and no more than 5 mg/kg lead.

### **Preparation/Extraction**

#### *Vitis Vinifera* (Grape) Fruit Extract

A product information sheet on a mixture that contains *Vitis Vinifera* (Grape) Fruit Extract states that the solvent of extraction is glycerin.<sup>7</sup> The resulting composition of the mixture is 75-100% glycerin, 50-75% *Vitis Vinifera* (Grape) Fruit Extract, and 10-25% water, and the ratio of extract to botanical is 2:1. Potassium sorbate and sodium benzoate, 0.3% each, are used as preservatives. The extract is filtered clear after preparation.

#### *Vitis Vinifera* (Grape) Leaf Extract

A product information sheet on a mixture that contains *Vitis Vinifera* (Grape) Leaf Extract states that the solvent of extraction for this product is also glycerin.<sup>9</sup> The resulting composition of the mixture is 75-100% glycerin, 10-25% water, and 5-10% *Vitis Vinifera* (Grape) Leaf Extract. As above, potassium sorbate and sodium benzoate, 0.3% each, are used as preservatives and the extract is filtered clear after preparation.

Another source reported the extraction of grape leaves with a propylene glycol solution.<sup>15</sup> The composition of this extract was not provided.

#### *Vitis Vinifera* (Grape) Seed Extract

One manufacturer reported that *Vitis Vinifera* (Grape) Seed Extract is prepared as a concentrated extract by separating the seeds from the fruit, cleaning and comminuting the seeds, extracting with alcohol, and then filtering the extract.<sup>16</sup> The filtrate is concentrated by distillation, and then spray-dried. The ratio of fresh plant material to extract is 133:1.

USP-grade grape seed oligomeric proanthocyanidins (dietary supplement) is a fraction of an extract of ripe *Vitis vinifera* seeds.<sup>12</sup> The extract is prepared using alcohol, methanol, acetone, ethyl acetate, water or mixtures of these solvents. The extract is then further enriched in oligomeric proanthocyanidins by fractionation with ethyl acetate or by other means.

#### *Vitis Vinifera* (Grape) Skin Extract

Grape skin extract (enocianina), the FDA-approved color additive, is prepared by the aq. extraction (steeping) of the fresh deseeded marc remaining after grapes have been pressed to produce grape juice or wine (21CFR73.170). During the steeping process, sulfur dioxide is added and most of the extracted sugars are fermented to alcohol. The extract is concentrated by vacuum evaporation, during which practically all of the alcohol is removed.

## USE

### **Cosmetic**

The *Vitis vinifera* (grape)-derived ingredients included in this safety assessment are reported to have many possible functions in cosmetic formulations. Vitis Vinifera (Grape) Seed Extract is reported to function as an anti-caries agent, anti-dandruff agent, anti-fungal agent, anti-microbial agent, antioxidant, flavoring agent, light stabilizer, oral care agent, oral health care drug, and sunscreen agent.<sup>17</sup> Many of the other *Vitis vinifera* (grape) ingredients are reported to function as skin conditioning agents, and a few are reported to function as antioxidants. Five of the ingredients - the seed extract, the fruit powder, the juice, the juice extract, and the skin extract – are reported to function as flavoring agents and four of those five (all except the seed extract), as well as the skin powder, are reported to function as colorants. The *International Cosmetic Ingredient Dictionary and Handbook* does not list the functions for Vitis Vinifera (Grape) and Vitis Vinifera (Grape) Leaf Wax. A listing of all the reported functions for each ingredient is provided in Table 1.

The FDA collects information from manufacturers on the use of individual ingredients in cosmetics as a function of cosmetic product category in its Voluntary Cosmetic Registration Program (VCRP). VCRP data obtained from the FDA in 2012 indicate that Vitis Vinifera (Grape) Seed Extract is used in 495 cosmetic formulations, Vitis Vinifera (Grape) Fruit Extract is used in 238 cosmetic formulations, and Vitis Vinifera (Grape) Leaf Extract is used in 80 cosmetic formulations.<sup>18</sup> The other in-use *Vitis vinifera* (grape)-derived ingredients are used in less than 15 formulations and no uses were reported for 11 other *Vitis vinifera* (grape)-derived ingredients.

The *Vitis vinifera* (grape)-derived ingredients are used at relatively low concentrations in cosmetic formulations. Vitis Vinifera (Grape) Leaf Extract is included at up to 3% in leave-on formulations (perfumes); Vitis Vinifera (Grape) Fruit Extract and Vitis Vinifera (Grape) Juice are included at up to 2% in rinse-off skin cleansing products and paste masks and mud packs, respectively.<sup>19</sup> All others are used at <1% in formulation. Although no reported uses were received in the VCRP for Vitis Vinifera (Grape) Shoot Extract, use concentration data were provided in the industry survey. Thus, it should be presumed that Vitis Vinifera (Grape) Shoot Extract is used in at least two cosmetic formulations.

Frequency and concentration of use data categorized by exposure and duration of use are provided in Table 7, and the ingredients for which no uses are reported are listed in Table 8.

Various products containing *Vitis vinifera* (grape)-derived ingredients may be applied to the eye area or mucous membranes, or could be incidentally ingested. Additionally, Vitis Vinifera (Grape) Fruit Extract, Vitis Vinifera (Grape) Fruit Water, Vitis Vinifera (Grape) Juice, Vitis Vinifera (Grape) Leaf Extract, and Vitis Vinifera (Grape) Seed Extract are used in cosmetic products that could possibly be inhaled; concentrations of use for ingredients used in products that could be inhaled range from 0.00002% Vitis Vinifera (Grape) Seed Extract in pump hairsprays to 3% Vitis Vinifera (Grape) Leaf Extract in perfumes. In practice, 95% to 99% of the droplets/ particles released from cosmetic sprays have aerodynamic equivalent diameters >10 µm.<sup>20-23</sup> Therefore, most droplets/particles incidentally inhaled from cosmetic sprays would be deposited in the nasopharyngeal and bronchial regions and would not be respirable (i.e., they would not enter the lungs) in any appreciable amount.<sup>20,23</sup>

All of the *Vitis vinifera* (grape)-derived ingredients named in this safety assessment, with the exception of hydrolyzed grape skin, are listed in the European Union inventory of cosmetic ingredients.<sup>24</sup>

### **Non-Cosmetic**

#### *Vitis Vinifera* (Grape) Seed Extract

Grape seed extracts are used as nutritional supplements.<sup>10</sup>

#### *Vitis Vinifera* (Grape) Skin Extract

Grape skin extract (enocianina) is a food color additive exempt from batch certification that can be used for coloring only still and carbonated drinks and ades, beverage bases, and, with restrictions, alcoholic bases (21CFR73.170). According to the evaluation of the Joint FAO/WHO Expert Committee on Food Additives (JECFA), the acceptable daily intake (ADI) of grape skin extract is 0-2.5 mg/kg bw.<sup>25</sup>

## TOXICOKINETICS

It has been reported that most phenolic compounds in grapes are readily metabolized by the gut flora, producing metabolites that potentially can be absorbed into the bloodstream by passive diffusion or active transport systems.<sup>26</sup> A number of factors may play a role in the bioavailability of polyphenols, but maximum plasma values are generally reached between 5 min and 2 h after administration. Oligomeric procyanidins and other higher molecular weight phenols are not appreciably absorbed, but they can release monomer and dimer units and epicatechin that can be absorbed.

## **TOXICOLOGICAL STUDIES**

### **Single Dose (Acute) Toxicity**

#### **Dermal**

##### **Vitis Vinifera (Grape) Seed Extract**

The acute dermal toxicity of Vitis Vinifera (Grape) Seed Extract (trade name ActiVin; a water-ethanol extract) was evaluated in five male and five female albino rats.<sup>13</sup> A single dose of 2 g/kg moistened with 0.3 ml deionized water was applied to the clipped intact dorsal skin of each animal for 24 h, and the dose covered approximately 5-6% of the total body surface. The test site was covered with a gauze bandage that was secured with tape, and collars were placed on the animals to avoid ingestion. The animals were observed for 14 days. None of the animals died during the study, and there were no test material-related clinical findings, body weight changes, or findings at necropsy. Very slight to slight erythema and desquamation was observed in all animals; these dermal responses subsided in all but three animals by day 12. One male rat had edema from day 6 to day 9. The dermal LD<sub>50</sub> of Vitis Vinifera (Grape) Seed Extract in albino rats was >2 g/kg; this dose was also the no-observed effect level (NOEL) for systemic toxicity in this dermal study.

#### **Oral**

##### **Vitis Vinifera (Grape) Seed Extract**

Five male and five female albino rats were given a single dose of 5 g/kg Vitis Vinifera (Grape) Seed Extract (trade name ActiVin) by gavage.<sup>13</sup> The animals were observed for 14 days. One female died on day 1 of the study. Matting and test material around the mouth, hypoactivity, and ocular discharge were noted for some animals; all animals appeared normal by day 3. The oral LD<sub>50</sub> of Vitis Vinifera (Grape) Seed Extract in albino rats was >5 g/kg.

The acute oral toxicity of a grape seed extract (extracted in water and ethanol) containing 89.3% proanthocyanidins was determined using groups of 5 male and 5 female F344/DuCrj rats.<sup>27</sup> The extract was dissolved in purified water, and the animals were dosed by gavage with 0, 2, or 4 g/kg of the extract at a rate of 10 ml/kg bw. None of the animals died, and the LD<sub>50</sub> of the grape seed extract was >4 g/kg.

##### **Vitis Vinifera (Grape) Seed/(Grape) Skin Extract**

The acute oral toxicity of a mixed grape seed and grape skin extract (extracted in ethanol) containing 76% total polyphenols was determined in a litmus test using female Wistar rats.<sup>26</sup> Three rats were given a single oral dose by gavage of 5 g/kg in saline at a rate of 10 ml/kg. Three negative control rats were dosed with saline only. There were no signs of toxicity for up to 14 days after dosing, and no gross lesions were observed at necropsy. The LD<sub>50</sub> of the mixed grape seed/skin extract was >5 g/kg.

### **Repeated Dose Toxicity**

Dietary repeated dose toxicity studies are presented in Table 9.

In a 3-wk study in which female SKH-1 hairless mice were fed a diet containing 0, 0.2, or 0.5% grape seed extract containing 89.3% proanthocyanidins for 3 wks, no signs of toxicity were reported. In 90-day dietary repeated dose studies in rats, the NOAELs of grape seed extract and grape skin extract were approximately 2150 and 1780 mg/kg bw/day for male and female rats, respectively. No toxic effects were observed in female B6C3F<sub>1</sub> mice after 6 mos of dietary administration of up to 500 mg/kg bw/day Vitis Vinifera (Grape) Seed Extract or in male rats fed 100 mg/kg bw/day Vitis Vinifera (Grape) Seed Extract for 12 mos. Dietary administration of 7.5 or 15% of a grape colour extract to Beagle dogs for 90 days resulted in a statistically significant decrease in body weight gains in the high dose group; no other significant changes were observed.

#### **Effect on UV-Induced Skin Pigmentation**

##### **Vitis Vinifera (Grape) Seed Extract**

The lightening effect of the oral administration of a grape seed extract (extracted in water and ethanol) containing 89.3% proanthocyanidins on UV-induced pigmentation of guinea pig skin was examined.<sup>28</sup> The extract did not contain resveratrol or other phenolic compounds, such as anthocyanidins and flavonols. Using a PEN-RAY lamp (UV containing UVA and UVB, peak at 366 nm), two areas on the backs of male and female brownish guinea pigs were irradiated 2x/wk for 3 wks with 0.9 J/cm<sup>2</sup> UV. One wk after the final UV exposure, groups of 5 irradiated animals were fed a diet containing 1% of the grape seed extract or a standard diet for 8 wks. The lightening effect was determined every 2 wks by measuring the L\*-value (lightness) and the melanin index at the two irradiated sites and an unexposed site. The L\*-value was measured with a reflectance spectrophotometer, and the melanin index was calculated using these data. After 8 wks of dosing, blood samples were taken from each animal and the animals were then killed. Skin samples were taken from UV-irradiated and a non-treated sites and evaluated for 3,4-dihydroxyphenylalanine (DOPA)-positive melanocytes and markers of oxidative DNA damage.

There were no differences in body wts between the groups. The UV-induced skin pigmentation was reduced in the group fed grape seed extract, as indicated by the increase in L\*-value and the decrease in melanin index in UV-induced pigmented skin throughout the study as compared to control values; these differences were not statistically significant. These parameters were similar for both groups in un-irradiated skin. The number of DOPA-positive melanocytes in the grape seed extract group was decreased compared to the control group. The number of melanin 8-hydroxy-2'-deoxyguanosine (8-OHdG)-positive cells, melanin-Ki-67-positive cells, and melanin proliferating cell nuclear antigen (PCNA)-positive cells in irradiated skin also decreased in

the grape skin extract group compared to controls; the decrease observed with melanin-Ki-67-positive cells was statistically significant.

### **REPRODUCTIVE AND DEVELOPMENTAL TOXICITY**

Published reproductive and developmental toxicity data were not found for *Vitis Vinifera* (Grape)-derived ingredients. A reproduction study on grape color extract is described below. Information on estrogenic activity of some of the constituents of *Vitis vinifera* is provided in Table 6.

#### **Grape Color Extract**

A two-generation reproductive study on grape color extract was performed using Sprague-Dawley rats.<sup>29</sup> (The Code of Federal Regulations (21CFR73.169) states that the color additive grape color extract is an aq. solution of anthocyanin grape pigments made from Concord grapes (*Vitis labrusca*) or a dehydrated water soluble powder prepared from the aq. solution. The aq. solution is prepared by extracting the pigments from precipitated lees produced during the storage of Concord grape juice. It contains the common components of grape juice, namely anthocyanins, tartrates, malates, sugars, and minerals, etc., but not in the same proportion as found in grape juice. The dehydrated water soluble powder is prepared by spray drying the aq. solution containing added malto-dextrin). Groups of 25 male and 25 female rats (F<sub>0</sub> generation) were fed diets containing 0, 7.5, or 15% (w/w) grape color powder or a diet containing 9% by wt malto-dextrin for 3 wks; after 3 wks, the rats were mated within their respective groups. Female F<sub>0</sub> rats, which were allowed to deliver, were fed the test diets throughout mating, gestation, and lactation. Each litter (the F<sub>1</sub> generation) was culled to 10 pups (5 males and 5 females if possible) on day 4. On day 21 of lactation, two F<sub>1</sub> males and two F<sub>1</sub> females were selected for a subsequent 13-wk study followed by a reproduction study. The F<sub>0</sub> parents and the remaining offspring were killed.

The selected F<sub>1</sub> animals were fed the same dietary levels of grape color extract as their parents. After 13 wks of dosing, the rats were mated within their respective groups. The F<sub>1</sub> rats were also allowed to deliver and were fed the test diets throughout mating, gestation, and lactation. The F<sub>2</sub> generation litters were culled as described above. On day 21 of lactation, all F<sub>1</sub> parents and F<sub>2</sub> pups were killed.

All animals, except one F<sub>1</sub> male of the malto-dextrin group, survived until scheduled termination. Dietary administration of up to 15% grape color powder had no effect on reproductive parameters or fertility. Body weights of the F<sub>1</sub> and F<sub>2</sub> pups of both test groups were statistically significantly decreased compared to controls at day 21 of lactation. Also, compared to controls, the body weights of F<sub>0</sub> pups of the high-dose group were statistically significantly decreased on day 4, while the body weights of F<sub>1</sub> pups of both test groups were statistically significantly decreased at birth. No microscopic lesions were reported in any of the groups.

In the F<sub>1</sub> animals fed the test diets for 13 wks prior to dosing, the group mean body weight gain was statistically significantly decreased in the high dose females. Statistically significant differences in several clinical chemistry parameters were observed between groups after 6 wks of dosing; the values were comparable at the end of 13 wks of dosing. The following statistically significant differences were recorded at necropsy regarding body and organ weights of the F<sub>1</sub> animals: body weights of the high dose animals were decreased; absolute and relative liver weights were decreased in males and females of both test groups; absolute adrenal gland weights were decreased in males of both test groups and high-dose females; and relative thyroid gland weights were decreased in males of both test groups.

### **GENOTOXICITY**

Genotoxicity testing on grape-derived extracts is summarized in Table 10. (Table 6 includes information on the genotoxic potential of some of the constituents of *Vitis vinifera*).

*In vitro*, mixed results were reported in the genotoxicity of *Vitis vinifera* (grape)-derived ingredients but *in vivo*, mostly negative results were obtained. Fractions of raw grapes demonstrated potent mutagenic activity in an Ames test,<sup>30</sup> and water and ethanol extracts of red and white grapes enhanced mitomycin-C (MMC)-induced sister chromatid exchanges (SCEs) in a SCE assay in human lymphocytes, but there was no effect on SCEs without MMC.<sup>6</sup> Grape juice was also mutagenic *in vitro*, as demonstrated in the Ames test.<sup>31,32</sup> However, grape seed extract was not mutagenic *in vitro* in an Ames test or chromosomal aberration assay,<sup>27</sup> nor *in vivo* in the mouse micronucleus test.<sup>27,33</sup> A mouse micronucleus test with grape skin extract was negative.<sup>33</sup> *In vitro*, grape seed/grape skin extract was weakly mutagenic in an Ames test but not genotoxic in a chromosomal aberration assay, and the mixed extract demonstrated a statistically significant increase in micronuclei after 48 h, but not after 72 h.<sup>26</sup>

### **CARCINOGENICITY**

#### **Oral**

##### **Vitis Vinifera (Grape) Seed Extract**

In a photocarcinogenicity study (described later in this report in Table 10), a group of 20 SKH-1 hairless mice were fed a diet containing 1% grape seed extract that contained 89.3% proanthocyanidins for 30 wks to determine whether dietary grape seed extract alone had any effect on skin tumor formation.<sup>34</sup> No skin tumors formed.

### **Inhibition of Tumor Promotion**

The inhibition of tumor promotion by *Vitis vinifera* has been assessed in many studies; some of these studies are summarized in Table 11.

Seed polyphenols and extracts in particular were shown to inhibit 7,12-dimethylbenz[a]anthracene (DMBA)-initiated and 12-*O*-tetradecanoylphorbol-13-acetate (TPA)-promoted tumors in mouse skin; dermal application and dietary administration both had significant inhibitory activity.<sup>35-39</sup> Dietary grape seed extract also inhibited UV-initiated, UV-promoted, or UV-initiated and promoted skin tumors in hairless mice,<sup>34</sup> and it inhibited the formation of azoxymethane (AOM)-induced aberrant crypt foci (ACF) in the intestines of rats.<sup>40</sup> Some of the studies summarized in Table 11 examined the effect of applying DMBA to mice and then later either treating the animals topically or in the diet with grape seed extract without TPA.<sup>35,36,41</sup> Mice did not develop tumors when dosed dermally or orally with grape seed extract after initiation with DMBA.

### **IRRITATION AND SENSITIZATION**

#### **Skin Irritation/Sensitization**

Dermal irritation and sensitization data are presented in Table 12.

In *in vitro* predictive model testing, a product containing 3% Vitis Vinifera (Grape) Fruit Extract was a non-irritant in a dermal irritation test in human skin, a product containing 10% Vitis Vinifera (Grape) Fruit Extract was non-/minimally irritating in an Epiderm MTT viability assay, and hydrolyzed grape skin was non-irritating in an MTT assay. In a single-dose study in NZW rabbits, Vitis Vinifera (Grape) Seed Extract applied neat was classified as moderately irritating; in a human 2-wk use study, a formulation containing 0.15% Vitis Vinifera (Grape) Seed Extract was not an irritant. In an *in vitro* assay of pro-sensitizing potential, hydrolyzed grape skin did not increase the expression of the investigated markers and did not show any stimulating potential of the immune cellular response mediated by monocytes/ macrophages. In clinical testing, products containing up to 10% Vitis Vinifera (Grape) Fruit Extract, a formulation containing 0.1% Vitis Vinifera (Grape) Juice, cosmetic formulations containing 0.5% Vitis Vinifera (Grape) Juice Extract, and Vitis Vinifera (Grape) Seed Extract tested at a maximum concentration of 1% in a raw material were not irritant or sensitizers in human repeated insult patch testing (HRIPTs).

#### **Occupational Exposure**

A skin prick-to-prick test was performed on vineyard workers to assess the prevalence of sensitization to grapes with occupational exposure.<sup>42</sup> Three groups of vineyard workers, 120/group, were tested: harvesters (Group A), workers in grape selection (Group B), and workers operating de-stemming/crushing/pressing machines (Group C); a group of 120 office employees (Group D) was used as a negative control group. For the test, the needle was inserted into a cleaned grape and then inserted into the skin. Normal saline was used as a negative control. Eight harvesters in Group A (6.7%) and five grape selection workers in Group B (4.2%) had positive prick-to-prick tests to grapes; an additional 15 workers in Group A and 9 workers in Group B had weak positive reactions that were considered negative in this study. None of the workers in the other two groups had positive reactions. (Workers in Groups A and B had greater exposure to grapes than did workers in Groups C or D.) The reported sensitization to grapes was asymptomatic; none of the employees tested had any reported history or symptoms upon exposure.

#### **Case Report**

A female grape farmer presented with an eczematous dermatitis of the hand.<sup>43</sup> The genus and species of grape were not stated. Patch testing with a crushed bud that had not been exposed to gibberellin (a vegetable hormone she applied to the grapes), an ethanol extract of a bud, a crushed leaf, an ethanol extract of a leaf, and with gibberellin was performed using Finn chambers, as was patch testing with standard allergens and several photoallergens. The only positive reactions were to the crushed and ethanol-extracted bud preparations. Irradiation with 0.7 J/cm<sup>2</sup> ultraviolet A (UVA) and 15 mJ/cm<sup>2</sup> UVB light increased the erythema and edema. The minimal response dose of UVA was >1.4 J/cm<sup>2</sup> and the minimal erythema dose of UVB was 45 mJ/cm<sup>2</sup>. In similar testing of 22 farmers, a weak positive reaction to the bud and/or leaf was observed in 6 subjects. The reactions did not increase with UV irradiation and subsided within 96 h.

### **Ocular Irritation**

#### **In Vitro**

##### **Vitis Vinifera (Grape) Fruit Extract**

In an EpiOcular assay, a product containing 3% Vitis Vinifera (Grape) Fruit Extract was predicted to be a minimal ocular irritant.<sup>44</sup> The ocular irritation potential of a single sample of a blend containing 3% Vitis Vinifera (Grape) Fruit Extract, extracted in water, was evaluated in a standard volume-dependent dose-response study using the ocular irritation test method. The irritation Draize equivalent scores ranged from 4.5 to 6.4 for neat samples of the product tested at volumes ranging from 25 -125 µl.

The irritancy classification for a product containing 10% Vitis Vinifera (Grape) Fruit Extract was non-irritating/minimal.<sup>45</sup> An EpiOcular MTT viability assay was performed to determine the ocular irritation potential of a product containing 10% Vitis Vinifera (Grape) Fruit Extract that was extracted with water. The tissue samples were treated with neat test article for 16, 64, and 256 min. The ET<sub>50</sub> was >256 min.



#### Vitis Vinifera (Grape) Seed Extract

A product containing 0.15% Vitis Vinifera (Grape) Seed Extract was classified as a mild ocular irritant during in vitro testing.<sup>46</sup> A bovine corneal opacity and permeability assay (BCOP) was performed with undiluted samples of an after shave lotion containing 0.15% Vitis Vinifera (Grape) Seed Extract; the extract was prepared with the extraction solvents butylene glycol and water. Sterile deionized water served as the negative control and ethanol as the positive control. The in vitro score for the test article was 1.0. (Test materials with in vitro scores of 0-25 are classified as mild irritants). The positive control had an in vitro score of 43.2; test materials with in vitro scores of 25.1-55 are classified as moderate irritants.

#### Hydrolyzed Grape Skin

Hydrolyzed grape skin was predicted to be non-irritating to eyes in a cytotoxicity assay evaluating ocular irritation potential.<sup>47</sup> A neutral red uptake (NRU) assay using fibroblast cultures was performed with 0.15 – 5 mg/ml hydrolyzed grape skin. Sodium lauryl sulfate (SLS) was used as a positive control. The IC<sub>50</sub> value (i.e., the concentration of test compound that induces a 50% decrease of cell growth/survival) for hydrolyzed grape skin was >5 mg/ml. The IC<sub>50</sub> value for the positive control was 0.063 mg/ml.

#### Non-Human

##### Vitis Vinifera (Grape) Seed Extract

The ocular irritation potential of Vitis Vinifera (Grape) Seed Extract (trade name ActiVin) was evaluated in six female NZW rabbits.<sup>13</sup> The test article, 85 mg, was instilled into the conjunctival sac of the right eye, the eyelid was held closed for 1 sec, and the eye was not rinsed. The contralateral eye served as an untreated control. The eyes were scored for irritation using the Draize method at 1, 24, 48, and 72 h and 4, 7, and 14 days after instillation of the test article. Conjunctival irritation was observed in all animals, four animals had iridal reactions, and three had corneal reactions. The irritation was reversible and completely subsided by day 14. The Maximum Average Score (MAS) at 24 h for Vitis Vinifera (Grape) Seed Extract was 16.7/110.

### SUMMARY

This report addresses the safety of 24 Vitis Vinifera (Grape)-derived ingredients as used in cosmetics. These ingredients are reported to have many functions in cosmetics, but the most frequently reported function of the Vitis Vinifera (Grape) ingredients is as a skin conditioning agent. According to VCRP data obtained from the FDA, Vitis Vinifera (Grape) Seed Extract is used in 495 cosmetic formulations, Vitis Vinifera (Grape) Fruit Extract is used in 238 cosmetic formulations, and Vitis Vinifera (Grape) Leaf Extract is reported to be used in 80 cosmetic formulations; nine other Vitis vinifera-derived ingredients are reported to be in use, and they are used in less than 15 formulations.

Fruit acids and trans-resveratrol are constituents of *Vitis vinifera*, and polyphenols are found in all parts of the plant. The main constituents of grape seeds are reported to be phenolic compounds, and standardized grape seed extracts are reported to contain 92-95% oligomeric proanthocyanidins. Grape skin extract contains anthocyanins, tartaric acid, tannins, sugars, and minerals.

Grapes are one of the 20 most frequently consumed raw fruits. The oral LD<sub>50</sub> values of grape seed extract and grape skin extract in rats were > 4-5 and >5 g/kg, respectively, and the dermal LD<sub>50</sub> (and NOEL for systemic toxicity) in albino rats was >2 g/kg.

In a 3-wk dietary study in which female SKH-1 hairless mice were fed a diet containing 0, 0.2, or 0.5% grape seed extract containing 89.3% proanthocyanidins for 3 wks, no signs of toxicity were reported. In 90-day dietary repeated dose studies in rats, the NOAELs of grape seed extract and grape skin extract were approximately 2150 and 1780 mg/kg bw/day for male and female rats, respectively. No toxic effects were observed in female B6C3F<sub>1</sub> mice after 6 mos of dietary administration of up to 500 mg/kg bw/day Vitis Vinifera (Grape) Seed Extract or in male rats fed 100 mg/kg bw/day Vitis Vinifera (Grape) Seed Extract for 12 mos. Dietary administration of 7.5 or 15% of a grape colour extract to Beagle dogs for 90 days resulted in a statistically significant decrease in body weight gains in the high dose group; no other significant changes were observed. Grape seed extract reduced UV-induced skin pigmentation in guinea pigs, but the difference was not statistically significant when compared to controls that did not receive grape skin extract.

A two-generation reproductive study in which 7.5 or 15% grape colour extract was fed in the diet was performed using Sprague-Dawley rats. The only statistically significant effects observed were decreases in the body weights of F<sub>1</sub> and F<sub>2</sub> pups of both test groups and in body weights and liver, adrenal gland, and thyroid gland weights in F<sub>1</sub> animals fed the test article for 30 days prior to mating.

*In vitro*, mixed results were reported in the genotoxicity of *Vitis vinifera* (grape)-derived ingredients but *in vivo*, mostly negative results were obtained. Fractions of raw grapes demonstrated potent mutagenic activity in an Ames test, and water and ethanol extracts of red and white grapes enhanced mitomycin-C (MMC)-induced sister chromatid exchanges (SCEs) in a SCE assay in human lymphocytes, but there was no effect on SCEs without MMC. Grape juice was also mutagenic *in vitro*, as demonstrated in the Ames test. However, grape seed extract was not mutagenic *in vitro* in an Ames test or chromosomal aberration assay, nor *in vivo* in the mouse micronucleus test.<sup>27,33</sup> A mouse micronucleus test with grape skin extract was negative. *In vitro*, grape seed/grape skin extract was weakly mutagenic in an Ames test but not genotoxic in chromosomal aberration assay, and the mixed extract demonstrated a statistically significant increase in micronuclei after 48 h, but not after 72 h.

*Vitis vinifera*, the seed extract in particular, was shown to inhibit DMBA-initiated and TPA-promoted tumors in mouse skin; dermal application and dietary administration both had significant inhibitory activity. Dietary grape seed extract also inhibited UV-initiated, UV-promoted, or UV-initiated and promoted skin tumors in hairless mice. The formation of AOM-induced ACF in the intestines of rats was also inhibited by dietary grape seed extract. Dietary administration of 1% grape seed extract for 30 wks did not produce skin tumors in mice, and grape seed extract and grape seed powder were not tumor promoters when applied dermally to mice following initiation with DMBA.

In *in vitro* predictive model testing, a product containing 3% *Vitis Vinifera* (Grape) Fruit Extract was a non-irritant in a dermal irritation test in human skin, a product containing 10% *Vitis Vinifera* (Grape) Fruit Extract was non-/minimally irritating in an Epiderm MTT viability assay, and hydrolyzed grape skin was non-irritating in an MTT assay. In a single-dose study in NZW rabbits, *Vitis Vinifera* (Grape) Seed Extract applied neat was classified as moderately irritating; in a human 2-wk use study, a formulation containing 0.15% *Vitis Vinifera* (Grape) Seed Extract was not an irritant. In an *in vitro* assay of pro-sensitizing potential, hydrolyzed grape skin did not increase the expression of the investigated markers and did not show any stimulating potential of the immune cellular response mediated by monocytes/ macrophages. In clinical testing, products containing up to 10% *Vitis Vinifera* (Grape) Fruit Extract, a formulation containing 0.1% *Vitis Vinifera* (Grape) Juice, cosmetic formulations containing 0.5% *Vitis Vinifera* (Grape) Juice Extract, and *Vitis Vinifera* (Grape) Seed Extract tested at a maximum concentration of 1% in a raw material were not irritant or sensitizers in human repeated insult patch testing (HRIPTs). Some asymptomatic sensitization reactions were seen in an occupational setting in vineyard workers who had substantial exposure to grapes. One case study was found that reported positive reactions to grape bud preparations.

Products containing 3 and 10% *Vitis Vinifera* (Grape) Fruit Extract were predicted to be minimal ocular irritants in *in vitro* testing. In a non-human study using rabbits, the MAS at 24 h for *Vitis Vinifera* (Grape) Seed Extract was 16.7/110. A product containing 0.15% *Vitis Vinifera* (Grape) Seed Extract was classified as a mild ocular irritant during a BCOP assay, and hydrolyzed grape skin was predicting to be non-irritating to eyes in a NRU study.

## **DISCUSSION**

Most of the irritation and sensitization testing performed on the *Vitis vinifera*-derived ingredients included in this report demonstrated that these ingredients are not dermal irritants or sensitizers, with the exception of one 4-h semi-occlusive study of *Vitis Vinifera* (Grape) Seed Extract that reported moderate irritation using rabbits when the test substance was applied neat. Because all the other irritation and sensitization tests were negative, including a human study using up to 10% *Vitis Vinifera* (Grape) Fruit Extract in a product, the CIR Expert Panel was of the opinion that the one study was an outlier and that the weight of evidence supports the view that these ingredients are not irritants or sensitizers.

The Panel discussed the findings of mutagenic activity of grape and grape juice in some of the bacterial mutagenicity tests. The Panel is aware that there is a history of positive Ames tests with some foods, including grape. Although positive results for mutagenicity occur in bacterial assays, it is known that constituents of foods such as grapes, e.g. flavonoids, do not appear to be genotoxic to mammals *in vivo*. Additionally, *Vitis vinifera*-derived extracts have demonstrated an inhibition of tumor promotion. Therefore, the mutagenic effects in bacterial systems were not considered relevant to the safety of these cosmetic ingredients.

The *Vitis vinifera* plant parts contain some constituents, such as ascorbic acid, biotin, and malic acid, which are cosmetic ingredients for which a CIR safety assessment is available. Others constituents are compounds that have been discussed in previous CIR assessments. For example, *Vitis vinifera*, and therefore derived extracts, contains a variety of phytochemicals, all present at relatively low concentrations. The Panel has discussed in previous CIR safety assessments that although some of these phytochemicals could exert significant biological effects, the low levels in conjunction with the currently reported exposure routes and use concentrations preclude significant effects. Also, although no dermal absorption data were available for those ingredients that could potentially be absorbed, extensive data are available showing that these phytosterol constituents at the potential exposure levels are not estrogenic, are not reproductive toxicants, are not genotoxic, and are not carcinogenic. The Panel also noted that low levels of quercetin are present in some components of *Vitis vinifera*. However, again, because the *Vitis vinifera*-derived ingredients are used at very low concentrations in cosmetics, and because the concentrations of quercetin in the plant parts are low, the presence of quercetin was below the level of toxicological concern.

The leaf extract, which is used at up to 3% in perfumes, is a highly colored component, and the Panel discussed the possibility that the leaf extract could be photoactive. The dermatologists on the Panel remarked that phototoxicity issues have not been reported in vineyard workers, and the Panel relied on this clinical experience to alleviate the concern of possible phototoxic effects of *Vitis Vinifera* (Grape) Leaf Extract.

The Panel discussed the issue of incidental inhalation exposure to *Vitis vinifera* (grape)-derived ingredients from products that may be aerosolized. There were no inhalation toxicity data available. *Vitis Vinifera* (Grape) Seed Extract is reportedly used at a concentration of 0.00002% in pump hairsprays and *Vitis Vinifera* (Grape) Leaf Extract is reportedly used at a concentration of 3% in perfumes. The Panel noted that 95% – 99% of droplets/particles would not be respirable to any appreciable amount. Furthermore, droplets/particles deposited in the nasopharyngeal or bronchial regions of the respiratory tract present no toxicological concerns based on the chemical and biological properties of this ingredient. Coupled with the small actual exposure in the breathing zone

and the concentrations at which the ingredients are used, the available information indicates that incidental inhalation would not be a significant route of exposure that might lead to local respiratory or systemic effects. The Panel considered the data available to characterize the potential for *Vitis vinifera* (grape)-derived ingredients to cause systemic toxicity, irritation, sensitization or other effects. They noted that *Vitis vinifera* (grape)-derived ingredients did not produce systemic toxicity in oral single-dose or long-term (up to 12 mos) repeated dose studies; grape color extract was not a reproductive or developmental toxicant; *Vitis vinifera* (the seed extract in particular) inhibits the promotion of tumors; and the *Vitis vinifera* (grape)-derived ingredients do not appear to be irritants or sensitizers. A detailed discussion and summary of the Panel's approach to evaluating incidental inhalation exposures to ingredients in cosmetic products is available at <http://www.cir-safety.org/cir-findings>.

Finally, the Panel expressed concern regarding pesticide residues and heavy metals that may be present in botanical ingredients. They stressed that the cosmetics industry should continue to use the necessary procedures to limit these impurities in the ingredient before blending into cosmetic formulation.

### **CONCLUSION**

The CIR Expert Panel concluded the *Vitis vinifera* (grape)-derived ingredients listed below are safe in the present practices of use and concentration in cosmetics.

Vitis Vinifera (Grape);	Vitis Vinifera (Grape) Leaf Wax;*
Vitis Vinifera (Grape) Bud Extract;	Vitis Vinifera (Grape) Root Extract;*
Vitis Vinifera (Grape) Flower Extract;*	Vitis Vinifera (Grape) Seed;
Vitis Vinifera (Grape) Fruit Extract;	Vitis Vinifera (Grape) Seed Extract;
Vitis Vinifera (Grape) Fruit Powder;	Vitis Vinifera (Grape) Seed Powder;
Vitis Vinifera (Grape) Fruit Water;	Vitis Vinifera (Grape) Shoot Extract;
Vitis Vinifera (Grape) Juice;	Vitis Vinifera (Grape) Skin Extract;*
Vitis Vinifera (Grape) Juice Extract;	Vitis Vinifera (Grape) Skin Powder;*
Vitis Vinifera (Grape) Leaf Extract;	Vitis Vinifera (Grape) Vine Extract;
Vitis Vinifera (Grape) Leaf Oil;*	Vitis Vinifera (Grape) Vine Sap;*
Vitis Vinifera (Grape) Leaf/Seed/Skin Extract;*	Hydrolyzed Grape Fruit;*
Vitis Vinifera (Grape) Leaf Water;*	Hydrolyzed Grape Skin.*

Were ingredients in this group not in current use (as indicated by \*) to be used in the future, the expectation is that they would be used in product categories and at concentrations comparable to others in the group.

## TABLES

**Table 1. Definitions, Functions, and Chemical Class**<sup>17,48</sup>

<b>Ingredient (CAS No.)</b>	<b>Definition</b>	<b>Reported Function(s)</b>	<b>Chemical Class</b>
Vitis Vinifera (Grape) (85594-37-2)	a plant material derived from the whole plant, <i>Vitis vinifera</i>	not reported	botanical products and botanical derivatives
Vitis Vinifera (Grape) Bud Extract (85594-37-2)	the extract of the buds of <i>Vitis vinifera</i> (grape)	skin conditioning agent - misc	botanical products and botanical derivatives
Vitis Vinifera (Grape) Flower Extract (85594-37-2)	the extract of the flowers of <i>Vitis vinifera</i>	skin conditioning agent – emollient; fragrance ingredient	botanical products and botanical derivatives
Vitis Vinifera (Grape) Fruit Extract (84929-27-1; 85594-37-2)	the extract of the fruit of <i>Vitis vinifera</i>	skin conditioning agent – misc; antioxidant	botanical products and botanical derivatives
Vitis Vinifera (Grape) Fruit Powder (85594-37-2)	the powder obtained from the dried, ground fruit of <i>Vitis vinifera</i>	skin conditioning agent – misc; antioxidant; colorant; flavoring agent	botanical products and botanical derivatives
Vitis Vinifera (Grape) Fruit Water (85594-37-2)	an aq. solution of the steam distillate obtained from the fruit of <i>Vitis vinifera</i>	skin conditioning agent - misc	essential oils and waters
Vitis Vinifera (Grape) Juice (85594-37-2)	the liquid expressed from the fresh pulp of the grape	skin conditioning agent – misc; antioxidant; colorant; flavoring agent	botanical products and botanical derivatives
Vitis Vinifera (Grape) Juice Extract (85594-37-2)	the extract of the juice of <i>Vitis vinifera</i>	antioxidant; colorant; flavoring agent	botanical products and botanical derivatives
Vitis Vinifera (Grape) Leaf Extract (84929-27-1; 85594-37-2)	the extract of the leaves of <i>Vitis vinifera</i>	skin conditioning agent - misc	botanical products and botanical derivatives
Vitis Vinifera (Grape) Leaf Oil 8016-21-5	the essential oil derived from the leaves of the grape, <i>Vitis vinifera</i>	fragrance ingredient	essential oils and waters
Vitis Vinifera (Grape) Leaf/Seed/Skin Extract (85594-37-2)	the extract of the leaves, skin, and seeds of <i>Vitis vinifera</i>	antioxidant	botanical products and botanical derivatives
Vitis Vinifera (Grape) Leaf Water (85594-37-2)	an aq. solution of the steam distillate obtained from the leaves of <i>Vitis vinifera</i>	skin conditioning agent - misc	essential oils and waters
Vitis Vinifera (Grape) Leaf Wax (85594-37-2)	a wax obtained from the vine leaf of <i>Vitis vinifera</i>	not reported	waxes (natural and synthetic)
Vitis Vinifera (Grape) Root Extract (84929-27-1; 85594-37-2)	the extract of the roots of <i>Vitis vinifera</i>	skin conditioning agent - misc	botanical products and botanical derivatives
Vitis Vinifera (Grape) Seed (85594-37-2)	the seed of <i>Vitis vinifera</i>	skin conditioning agent - misc	botanical products and botanical derivatives
Vitis Vinifera (Grape) Seed Extract (84929-27-1; 85594-37-2)	the extract of the seeds of <i>Vitis vinifera</i>	anti-caries agent; anti-dandruff agent; anti-fungal agent; anti-microbial agent; antioxidant; flavoring agent; light stabilizer; oral care agent; oral health care drug; sunscreen agent	botanical products and botanical derivatives
Vitis Vinifera (Grape) Seed Powder (85594-37-2)	the powder obtained from the dried, ground seeds of <i>Vitis vinifera</i>	abrasive; exfoliant	botanical products and botanical derivatives
Vitis Vinifera (Grape) Shoot Extract	the extract of the shoots of the vines of <i>Vitis vinifera</i>	antioxidant, skin protectant	botanical products and botanical derivatives
Vitis Vinifera (Grape) Skin Extract (85594-37-2)	extract of the skin of the grape, <i>Vitis vinifera</i>	antioxidant; colorant; flavoring agent	botanical products and botanical derivatives
Vitis Vinifera (Grape) Skin Powder (85594-37-2)	the powder obtained from the dried, ground skin of <i>Vitis vinifera</i>	skin conditioning agent – misc; antioxidant; binder; colorant	botanical products and botanical derivatives
Vitis Vinifera (Grape) Vine Extract (85594-37-2)	the extract of the vine of <i>Vitis vinifera</i>	skin conditioning agent - misc	botanical products and botanical derivatives
Vitis Vinifera (Grape) Vine Sap	the sap obtained from the vines of <i>Vitis vinifera</i>	skin conditioning agent - misc	botanical products and botanical derivatives
Hydrolyzed Grape Fruit	the hydrolysate of the fruit of <i>Vitis vinifera</i> derived by acid, enzyme or other method of hydrolysis	cosmetic astringent; skin protectant, skin conditioning agent-misc	botanical products and botanical derivatives
Hydrolyzed Grape Skin	the hydrolysate of the skin of <i>Vitis vinifera</i> derived by acid, enzyme or other method of hydrolysis	antioxidant; light stabilizer; skin protectant; skin conditioning agent-emollient	botanical products and botanical derivatives

Table 2. Chemical and Physical Properties

Property	Description	Reference
<b>Vitis Vinifera (Grape) Fruit Extract</b>		
<i>Mixture containing 75-100% glycerin (solvent), 50-75% Vitis Vinifera (Grape) Fruit Extract, and 10-25% water</i>		
appearance	clear yellow liquid with a faint fruity odor	7
density	1.225-1.245	7
refractive index	1.445-1.465	7
pH	4.0-5.0	7
solubility	in water clear soluble	7
<b>Vitis Vinifera (Grape) Leaf Extract</b>		
<i>Mixture containing 75-100% glycerin (solvent), 5-10% Vitis Vinifera (Grape) Leaf Extract, and 10-25% water</i>		
appearance	dark brownish-red colored liquid with a faint herbal odor	9
density	1.215-1.235	9
refractive index	1.445-1.465	9
pH	4.0-5.0	9
solubility	in water clear soluble+	9
<b>Vitis Vinifera (Grape) Seed Extract</b>		
appearance	red to brown powder	16
water content	8% (upper limit)	16
<b>Vitis Vinifera (Grape) Skin Extract</b>		
appearance	red to purple powder or liquid	49
	purplish-red liquid	4
	purplish-red liquid, lump, powder, or paste with a characteristic odor	50
appearance in solution	red in acid solution; violet or blue in neutral to alkaline solution	49
solubility	soluble in water	50
<b>Hydrolyzed Grape Skin</b>		
appearance	ruby red aq. solution	51
odor	characteristic, fruity	51,52
boiling point	98-102°C (760 mm Hg)	52
density	≈1 g/cm <sup>3</sup>	52
pH	2.6 – 3.5	51
	2.8-4	52
solubility	completely soluble in water; soluble in alcohol and acetone	52
dry residue	≥1.5% w/w	51
water content	≥90%	52
phenol content	700 – 1500 mg/kg	51

Table 3. Chemical constituents by plant part<sup>2</sup>

Chemical	Amount (ppm)	Chemical	Amount (ppm)
<b>Plant</b>			
2,6-dimethyl-trans-octa-2,7-dien-1,6-diol-beta-d-glucopyranoside	NS	oleic-acid	230-1183
delphinidin	NS	petunidin-3-caffeoylglucoside	NS
leucocyanidin	NS	riboflavin	0.5- .2
limonene	NS	stigmaterol	NS
malic acid	NS	vitispirane	NS
<b>Fruit</b>			
2,2,6-trimethyl-8-(1-hydroxy-ethyl)-7-oxa-bicyclo-(4,3,0)-nona-4,9-diene	NS	lutein	0.7-7
2,6-dimethyl-trans,trans-octa-2,6-dien-1,8-diol	NS	lutein-5,6-epoxide	NS
2,6-dimethyl-trans-octa-2,7-dien-1,6-diol-6-o-alpha-d-arabinofuranosyl-beta-d-beta-d-glucopyranoside	NS	lutein-5-8-epoxide	NS
3,7-dimethyl-oct-1-ene-3,6,7-triol	NS	luteoxanthin	NS
3,7-dimethyl-oct-1-ene-3,7-diol	NS	lycopene	NS
3,7-dimethyl-octa-1,5,7-trien-3-ol	NS	lysine	150-772
3,7-dimethyl-octa-1,5-dien-3,7-diol	NS	magnesium	58-2310
3,7-dimethyl-octa-1,6-dien-3,5-diol	NS	malic-acid	1500 - 2000
3,7-dimethyl-octa-1,7-dien-3,6-diol	NS	malvidin	NS
a-hemicellulose	NS	malvidin-3-(6-p-coumaroylglucoside)-5-glucoside	NS
abscissic-acid	NS	malvidin-3-(p-coumaroylglucoside)	NS
acetic-acid	1500-2000	malvidin-3-caffeoylglucoside	NS
alanine	280-1440	malvidin-3-chlorogenic-acid-glucoside	NS
alpha-carotene	NS	malvidin-3-glucoside	NS
alpha-hydroxycarotene	NS	malvidin-3-o-beta-d-glucoside	NS
alpha-linolenic acid	390-2006	manganese	0.5-54
alpha-tocopherol	6-31	melibiose	NS
aluminum	1-154	mercury	0.011
antheraxanthin	NS	methionine	220-1132

**Table 3. Chemical constituents by plant part<sup>2</sup>**

Chemical	Amount (ppm)	Chemical	Amount (ppm)
anthocyanins	NS	molybdenum	0. -0.539
arginine	490-2520	mono-p-coumaryl-acid	NS
arsenic	0.001-0.889	monocaffeic-acid	NS
ascorbic-acid	99-600	monounsaturated fatty acids	230-1183
ascorbic-acid-oxidase		mutatoxanthin	NS
ash	4290-77,000	myricetin	NS
aspartic-acid	810-4167	myricetin-3-monoglucoside	NS
b-hemicellulose		myristic-acid	50-257
barium	0.66-15.4	neo-chlorogenic-acid	NS
benzoic-acid		neoxanthin	NS
beta-carotene	0.25-2.1	neoxanthin	NS
beta-ionone	NS	nerol-6-0-alpha-l-arabinofuranosyl-beta-d-glucopyranoside	NS
		nerol-6-0-alpha-l-rhamnopyranosyl-beta-d-glucopyranoside	NS
beta-sitosterol	NS	niacin	3-15.4
biotin	NS	nickel	0.01-0.77
boron	1-50	nitrogen	1100-7220
bromine	NS	nonacosane	NS
cadmium fruit 0.001 - 0.231 ppm	0.001-0.231	oxalic-acid	34
caffeic-acid	NS	p-coumaric-acid	NS
caffeoyl-tartrate	NS	p-coumaroyl-cis-tartrate	NS
caFFEoyltartaric-acid	NS	p-coumaroyl-trans-tartrate	NS
calcium	92-4774	paeonidin	NS
carbohydrates	177,700-914,095	paeonidin-3-(6-p-coumaroylglucoside)	NS
catalase	NS	paeonidin-3-5,-diglucoside	NS
catechol-oxidase	NS	paeonidin-3-caFFEoylglucoside	NS
chlorogenic-acid	NS	paeonidin-3-o-beta-d-glucoside	NS
cholesterol	NS	palmitic-acid	1620-8333
chromium	0.005-0.385	pantothenic-acid	0.2 - 1.3
cinnamic-acid	NS	pectin	300-3900
cis-caFFEic-acid	NS	pectin-methyl-esterase	NS
citric-acid	NS	pelargonidin	NS
cobalt	0.005-0.22	peroxidase	NS
copper	0.7-11.6	petunidin-3,5-diglucoside	NS
coumarin	NS	petunidin-3-(6-p-coumaroylglucoside)	NS
cryptochlorogenic-acid	NS	petunidin-3-glucoside	NS
cryptoxanthin	NS	petunidin-3-o-beta-d-glucoside	NS
cyanidin	NS	phenylalanine	140-720
cyanidin-3-galactoside	NS	phosphorus	117-1848
cyanidin-3-glucoside	NS	phytoene	NS
cystine	110-566	phytofluene	NS
d-catechin	NS	phytosterols	40-206
delphinidin-3,5-diglucoside:	NS	polyphenol-oxidase	NS
delphinidin-3-(6-p-coumaroylglucoside)	NS	potassium	1784-24640
delphinidin-3-(p-coumaroylglucoside)-5-glucoside	NS	procyanidin-b-2-3'-o-gallate	NS
delphinidin-3-0-beta-d-glucoside	NS	procyanidins	NS
delphinidin-3-caFFEoylglucoside	NS	praline	220-1132
dihydrophaseic-acid-4'-beta-d-glucoside	NS	protein	6350-35,236
ellagic-acid	NS	protopectinase	NS
enamelanin	NS	polyunsaturated fatty acids	1690-8693
epicatechin	NS	quercetin	NS
epicatechin-3-gallate	NS	quercetin-glucuronoside	NS
ergosterol	NS	quinic-acid	NS
fat	5010-33,898	protein	70,000-10,000
ferulic-acid	NS	raffinose	NS
fiber	4210 -24,640	roseoside	NS
fluorine	0.1-0.6	rubidium	0.4-5.5
folacin	0.03-0.23	selenium	0.012
formic-acid	NS	serine	320-1646
fructose	NS	saturated fatty acids	1890-9722
gaba	NS	silicon	1-28
galactose	NS	silver	0.022-0.077
galacturonic-acid	NS	sodium	2-454
gallic-acid	NS	stachyose	
gamma-carotene	NS	strontium	1.54-38.5
geraniol	NS	succinadehydrogenase	NS
geraniol-6-o-alpha-l-arabinofuranosyl-beta-d-glucopyranoside	NS	succinic-acid	NS
geraniol-6-o-alpha-l-rhamnopyranosyl-beta-d-glucopyranoside	NS	sugar	30,000-189,000
glucose	NS	sulfur	7-888
glucose-6-phosphate-dehydrogenase:	NS	tartaric-acid	15-20
glutamic-acid	1380-7099	tartaric-acid-caFFEoyl-ester	15-20
glycine	200-1029		

**Table 3. Chemical constituents by plant part<sup>2</sup>**

Chemical	Amount (ppm)	Chemical	Amount (ppm)
hentriacontane		thiamin	0.8-4.9
hexokinase		threonine	180-926
histidine	240-1235	titanium	0.11-7.7
iron	1.5-154	trans-caffeic-acid	
isochlorogenic-acid		tryptophan	30-154
isoleucine	50-257	tyrosine	120-617
kaempferol-3-monoglucoside	NS	valine	180-926
lactic-acid	NS	violaxanthin	NS
lead	0.02-9	vitamin B6	1-6
leucine	140-720	vomifoliol	NS
leucoanthocyanidole	NS	water	761,000-897,000
linalol	NS	xylose	NS
linalol-6-0-alpha-l-arabinofuranosyl-beta-d-glucopyranoside	NS	zeaxanthin	NS
linalol-6-0-alpha-l-rhamnopyranosyl-beta-d-glucopyranoside	NS	zinc	0.4-27
linoleic-acid	1300-6687	zirconium	0.44-1.54
lithium	0.088-0.308		
<b>Fruit Juice</b>			
2-phenylethylamine	NS	diethylamine	NS
3-hydroxy-beta-damascone	NS	dihydrofuran	NS
9-hydroxy-megastigm-4,6,7-trien-3-one	NS	dimethylamine	NS
acuminoside	NS	ethylamine	NS
alpha-3-oxo-damascone	NS	geraniol-beta-d-glucoside	NS
alpha-3-oxo-ionone	NS	isoamylamine	NS
alpha-amylamine	NS	isobutylamine	NS
benzyl-6-o-beta-d-apiofuranosyl-beta-d-glucoside	NS	linalol-6-0-beta-d-apiofuranosyl-beta-d-glucoside	NS
beta-3-oxo-damascone	NS	linalol-beta-d-glucoside	NS
beta-phenylethanol-6-beta-d-arabinofuranosyl-beta-d-glucopyranoside	NS	megastigm-5-en-7-yne-3,9-diol	NS
beta-phenylethanol-beta-d-glucoside	NS	n-propylamine	NS
beta-phenylethanol-beta-d-rutinoside	NS	nerol-6-0-beta-d-apiofuranosyl-beta-d-glucoside	NS
betaine	NS	nerol-beta-d-glucoside	NS
damascenone	0.013-0.085	pyrrolidine	NS
<b>Leaf</b>			
(DL)-gallicocatechin	NS	hirsutrin	NS
2-phenylethan-1-ol	NS	inositol	NS
acetic-acid	NS	isoquercitrin	NS
alpha-viniferin	23,400	isovitilagin	163
ascorbic-acid	3490-3870	kaempferol	NS
benzyl-alcohol	NS	lupeol	NS
benzyl-alcohol-6-o-l-arabinofuranosyl-beta-d-glucopyranoside	NS	luteolin	NS
benzyl-alcohol-beta-d-glucoside	NS	mono-p-coumaryl-acid	NS
benzyl-alcohol-beta-d-rutinoside	NS	monocaffeic-acid	NS
brevilagin	533	monoferulysuccinic-acid	NS
calcium-pectate	69,000	nerol	NS
citric-acid	NS	oleanolic-acid-methyl-ester	NS
citronellol	NS	pterostilbene	NS
d-catechin	NS	quercitrin	NS
epsilon-viniferin	30.900	quinic-acid	NS
flavonoids	40,000-50,000	resveratrol	90,400 ppm
fumaric acid	NS	selenium	NS
gallicocatechin	NS	vitilagin	89
glyceric-acid	NS		
<b>Leaf Wax</b>			
oleanolic-acid			
<b>Leaf – Essential Oil</b>			
α-terpineol	108,000	geraniol	145,200
elemol-acetate	130.2	linalol	273,000
<b>Essential Oil</b>			
hydroxy-citronellol	NS		
<b>Flower</b>			
asragalin			
<b>Stem</b>			
2-methoxy-3-isobutyl-pyrazine	NS	magnesium	4360
24-methyl-cycloartenol	NS	niacin	NS
alpha-amyrin	1030	obtusifoliol	NS
ascorbic-acid	310	octan-1-ol	NS
ash	88,000	oleanolic-aldehyde	NS
beta-amyrin	NS	phosphorus	1710
beta-carotene	43	potassium	20,100
calcium	17,700	riboflavin	6.9
chromium	9	selenium	NS

**Table 3. Chemical constituents by plant part<sup>2</sup>**

Chemical	Amount (ppm)	Chemical	Amount (ppm)
citrostadienol	NS	silicon	365
cobalt	33	sodium	156
cycloartenol	NS	thiamin	11
germanicol	NS	tin	12
iron	900	water	792,000
manganese	986	zinc	75
<b>Root</b>			
30-nor-lupan-3-beta-ol-20-one	NS	pyrophosphatase-nucleotide	NS
betulinic-acid	NS	salicylic-acid	NS
heptacosan-1-ol	NS	sinapic-acid	NS
phosphodiesterase	NS	triacontan-1-ol-tridecanoate	NS
<b>Seed</b>			
enotannin	NS	oleic-acid	22,200-74,000
epicatechin-3-gallate	NS	palmitic-acid	3300-11000
fat	60,000-200,000	protein	89,000
linoleic-acid	33,000-110,000	stearic acid	1440-4800
<b>Hull Husk</b>			
gentisic-acid	NS	syringic-acid	NS
o-hydroxybenzoic acid	NS	vanillic-acid	NS
p-hydroxybenzoic acid	NS		
<b>Petiole</b>			
oenin	NS		
NS – not specified			

**Table 4. Additional constituent data****Plant part not specified****Polyphenols**

- Cinnamic acids: coumaric, caffeic, ferulic, chlorogenic, and neochlorogenic acid<sup>5</sup>
- Benzoic acids: p-hydroxybenzoic acid; protocatechuic, vanillic, and gallic acid<sup>5</sup>

trans-Resveratrol (trans-3,5,40-trihydroxystilbene)<sup>53</sup>**Fruit****Polyphenols**

- Flavones: quercetin (traces) and quercitrin; quercetin-, kaempferol-, and myricetin-3-monoglucoside; quercetin-glucuronoside; astilbin; engeletin<sup>15</sup>
- Catechins: catechin; epicatechin, gallic acid, epicatechingallate<sup>15</sup>
- Anthocyanins: delphinidin-, petunidin-, malvidin- (41.2%), cyanidin-, and peonidin-3-monoglucosides;<sup>15</sup> 3-glucosides; 3-acetylglucosides; 3-coumaroylglucosides; 3-caffeoylglucosides; 3,5-diglucosides; 3-acetyl-5-diglucosides; 3-coumaroyl-5-diglucosides; and 3-caffeoyl-5-diglucosides of cyanidin, delphinidin, peonidin, petunidin, and malvidin<sup>53</sup>
- Procyanidins: procyanidin B<sub>1</sub>, B<sub>2</sub>, B<sub>3</sub>, B<sub>4</sub>, B<sub>5</sub>, B<sub>7</sub>, B<sub>8</sub>,<sup>15</sup> acylated procyanidins that are esters of gallic acid; 14 dimeric, 11 trimeric, and one tetrameric procyanidin<sup>53</sup>

 $\alpha$ -Hydroxy acids: tartaric, citric, and malic acids<sup>15</sup>Esters: containing cinnamic and tartaric acids<sup>15</sup>Aldehydes: vanillin; protocatechuic; cinnamic and coniferyl aldehydes<sup>15</sup>Vitamins: C, B group, PP<sup>15</sup>Carotene<sup>15</sup>Sugars: Fructose, Glucose<sup>15</sup>Polysaccharides: containing galactose, mannose, arabinose, rhamnose, galacturonic acid<sup>15</sup>Proteins<sup>15</sup>Volatile constituents<sup>15</sup>Waxes<sup>15</sup>Pectin<sup>15</sup>



**Table 4. Additional constituent data**

<b>Seeds</b>
Polyphenols (5-8 by wt%; <sup>5</sup> 60-70% of grape polyphenols are found in grape seeds; <sup>53</sup> they are flavan-3-ol derivatives)
- Catechins: (+)-catchins; (-)-epicatechin; (-)-epicatechin-3-O-gallate <sup>53</sup>
- Procyanidins: procyanidin B <sub>1</sub> , B <sub>2</sub> , B <sub>3</sub> , B <sub>4</sub> , B <sub>5</sub> , B <sub>7</sub> , B <sub>8</sub> <sup>15</sup> ; procyanidins C1; procyanidins B5-3'-gallate <sup>53</sup>
- Proanthocyanidins (mostly hexamers) <sup>53</sup>
- Flavonoids (4-5%): kaempferol-3-O-glucosides; quercetin-3-O-glucosides; quercetin; myricetin <sup>53</sup>
Proteins (7-10%): containing arginine, cystine, leucine (11.4%), valine, phenylalanine <sup>15</sup>
Triglycerides (6-20%): containing palmitic, stearic, oleic (37%), and linoleic (55%) acids <sup>15</sup>
Unsaponifiables (0.5-1%): phytosterols: b-sitosterol <sup>15</sup>
Phospholipids: phosphatidylserine, phosphatidylinositol, lecithin, cephalin, cerebrosides, phosphatidic acid <sup>15</sup>
Vitamin E <sup>15</sup>
<b>Leaves</b>
Polyphenols
- Anthocyanins <sup>15</sup>
- Catechins: catechin; epicatechin; gallo catechin; epicatechin-3-O-gallate <sup>15</sup>
- Ellagitannins: brevilagin-1; vitilagin; isovitilagin <sup>15</sup>
- Flavones: traces of quercitrin, quercetin, kaempferol, rutin, iso-quercitrin, luteolin <sup>15</sup>
Organic Acids: tartaric, malic, oxalic, fumaric, succinic, citric, and glyceric acids <sup>15</sup>
Phenol acids: o- and p-hydroxybenzoic acid; protocatechuic, gallic, vanillic, syringic, and ellargic acids <sup>15</sup>
Esters: containing cinnamic acids and tartaric acid <sup>15</sup>
Vitamins: C, PP, B group, folic acid <sup>15</sup>
Carotenoids <sup>15</sup>
Volatile constituents <sup>15</sup>
Waxes <sup>15</sup>
Proteins <sup>15</sup>
Mineral salts (5-7%) <sup>15</sup>

**Table 5. Conclusions of CIR safety assessments on ingredients that are constituents of Vitis vinifera (grape)**

Component Reviewed	Conclusion	Reference
Acetic Acid	safe as used ( $\leq 0.0004\%$ in leave-ons; $\leq 0.3\%$ in rinse-offs)	54
Ascorbic Acid	safe as used ( $\leq 10\%$ in leave-ons; $\leq 5\%$ in rinse-offs)	55
Benzoic Acid	safe as used ( $\leq 5\%$ in leave-ons; $\leq 5\%$ in rinse-offs; 0.08% in diluted for (bath) use formulations)	56
Benzyl Alcohol	safe as used ( $\leq 3\%$ in leave-ons; $\leq 10\%$ in rinse-offs; $\leq 0.9\%$ in diluted for (bath) use formulations)	56
Biotin	safe as used ( $\leq 0.6\%$ in leave-ons; $\leq 0.01\%$ in rinse-offs)	57
Cholesterol	safe as used safe as used ( $\leq 5\%$ in leave-ons; $\leq 1\%$ in rinse-offs)	58
Citric Acid	safe as used ( $\leq 4\%$ in leave-ons; $\leq 10\%$ in rinse-offs; $\leq 39\%$ in diluted for (bath) use formulations)	59
Fumaric Acid	safe as used ( $\leq 0.2\%$ in leave-ons; $\leq 0.2\%$ in rinse-offs; $\leq 5\%$ in diluted for (bath) use formulations)	60
Lactic Acid	safe for use at $\leq 10\%$ , final formulation pH $\geq 3.5$ , when formulated to avoid increasing sun sensitivity or when directions for use include the daily use of sun protection; safe for use in salon products at $\leq 30\%$ , final formulation pH $\geq 3.0$ , in products designed for brief, discontinuous use followed by thorough rinsing from the skin, when applied by trained professionals, and when application is accompanied by directions for the daily use of sun protection	61
Malic Acid	safe for use as a pH adjuster; <b>insufficient for other uses</b>	62
Myristic Acid	safe as used ( $\leq 10\%$ in leave-ons; $\leq 19\%$ in rinse-offs)	63
Niacin	safe as used ( $\leq 0.1\%$ in leave-ons)	64
Oleic Acid	safe as used ( $\leq 20\%$ in leave-ons; $\leq 19\%$ in rinse-offs)	65,66
Palmitic Acid	safe as used ( $\leq 16\%$ in leave-ons; $\leq 20\%$ in rinse-offs)	65,66
Pantothenic Acid	safe as used ( $\leq 0.01\%$ in leave-ons; 0.00001% in rinse-offs)	66,67
Salicylic Acid	safe as used when formulated to avoid skin irritation and when formulated to avoid increasing the skin's sensitivity to sun , or, when increased sun sensitivity would be expected, directions for use include the daily use of sun protection ( $\leq 3\%$ in leave-ons; $\leq 3\%$ in rinse-offs)	68
Stearic Acid	safe as used ( $\leq 22\%$ in leave-ons; $\leq 43\%$ in rinse-offs)	65,66
Succinic Acid	safe as used ( $\leq 0.2\%$ in leave-ons; $\leq 26\%$ in rinse-offs)	69
Tocopherol	safe as used ( $\leq 2\%$ in leave-ons; $\leq 0.4\%$ in rinse-offs; $\leq 0.8\%$ in products diluted for use)	70

**Table 6. Toxicity information on some components of Vitis Vinifera (grape)**

Component	Toxicity information	
Polyphenol		
Resveratrol	-in rats given daily oral administration of resveratrol (300, 1000, 3000 mg/kg for 28 days), nephrotoxicity and other signs of toxicity was observed at the high dose level, dehydration and loss of body wt were observed at the mid-dose level, and the NOAEL was 300 mg/kg/day; in several mammary cancer cell lines, resveratrol showed mixed estrogen agonist/antagonist activities, whereas in the presence of 17 $\beta$ -estradiol, it was an anti-estrogen; progesterone receptor (PR) protein expression was induced with the compound alone, but when combined with estradiol, the expression was suppressed; exhibited estradiol antagonist activity for estrogen receptor (ER)- $\alpha$ with select estrogen response elements and no such activity with ER- $\beta$ ; in vivo, resveratrol was not an agonist at the ER; when resveratrol and 17 $\beta$ -estradiol were administered in combination, a synergistic effect was observed; oral or subcutaneous (s.c.) administration of trans-resveratrol (produced no estrogenic response in the uterine tissue of the animals; trans-resveratrol was not mutagenic in an Ames test, induced dose-dependent chromosome aberrations in the Chinese hamster lung, and induced micronuclei, polynuclei, and karyorrhectic cells in a sister chromatid exchange assay	71
	- not genotoxic in a mouse or rat micronucleus test or in an Ames test	72
	- not an ocular or dermal irritant in rabbits; not a sensitizer in a local lymph node assay ( $\leq 25\%$ w/v in dimethylformamide); not mutagenic in an Ames test, was clastogenic in a chromosomal aberrations assay in human lymphocytes, non-genotoxic in an <i>in vivo</i> bone marrow micronucleus test in rats, not adverse effect in rats in repeated dose studies (up to 90 days with up to 700 mg/kg bw/day); 750 mg/kg bw/day was not embryotoxic in rats; readily absorbed, metabolized, and excreted in rats	73
	-concentrations of 1 nM - 100 $\mu$ M trans-resveratrol in DMSO, evaluated in a yeast estrogen screen, did not have estrogenic activity at any of the concentrations tested; when the same concentrations were measured for estrogenic activity in CHO-K1 cells, concentration-dependent ER $\alpha$ and ER $\beta$ agonist activity was observed and ER $\beta$ showed greater activation; compared to estradiol, resveratrol had weaker activity, and the agonist activity was inhibited by 4-hydroxytamoxifen	74
Anthocyanins	do not appear to be readily absorbed or metabolized; low acute oral toxicity; weight-of-evidence analysis indicates anthocyanins are not genotoxic	75
Carotenoids	no evidence of adverse biological activity	76
Lutein/Esters	single-dose, 4-wk, and 13-wk oral studies found no evidence of toxicity	76
Chlorogenic Acid	-an antioxidant that inhibited tumor promotion by phorbol esters in mice; some controversy exists over allergic reactions in green coffee beans, but it was accepted that chlorogenic acid was not the allergen	76
	-in mice, 2% (20,000 ppm) chlorogenic acid in the diet for 96 weeks induced papillomas and carcinomas of the forestomach, alveolar type II-cell tumors of the lung, and renal cell adenomas; few toxic effects resulted from acute exposure; subchronic dietary exposures did not induce clinical symptoms of toxicity, however, reduced kidney and adrenal wts and hyperplasia of the forestomach were observed; some genotoxic effects seen in vitro but not in vivo	77
Coumarin	<i>limited evidence</i> in experimental animals for carcinogenicity; <i>not classifiable as to its carcinogenicity in humans</i> (IARC)	78
Flavonoids	epidemiological studies implicated high dietary intake levels of flavonoids in heart disease, but a study of cancer risk failed to find a link; some evidence of genotoxicity in bacterial assays, but a European Organization of Cosmetic Ingredients Industries and Services (UNITIS) report stated that flavonoids do not appear to be genotoxic to mammals in vivo; flavonoids are not considered allergens	76
Quercetin	- genotoxic in vitro but not in vivo; some evidence for carcinogenicity (renal tumors) was found in one of several studies, in one species (rat), in one gender (male); antioxidant properties noted; estrogenic properties, similar to other flavonoids, were noted; overall conclusion by the Council of Europe Committee of Experts on Cosmetic Products was that quercetin did not present potential risks for human health, but that skin effects and dermal penetration data were needed to complete a toxicological profile; a weight of evidence approach supported a finding that at estimated dietary levels of as a dietary supplement (200-1200 mg/d), adverse health effects would not be produced; reduced histamine release from antigen-induced human basophil cells	76
	- quercetin alone, 100 $\mu$ M, increased the spontaneous number of sister chromatid exchanges (SCEs) in human lymphocytes; however, 50 and 100 $\mu$ M inhibited mitomycin C (MMC)-induced SCEs in a dose-dependent manner	6
(+)-Catechin; (-)-Epicatechin	no effect on SCEs in human lymphocytes in the presence or absence of MCC	6
Kaempferol	increased the frequency of sister chromatid exchanges in cultured hamster cells; shown to mutate and transform human and mouse cells in culture	79
Monoterpenes	these chemicals may be skin irritants	76
Phenolic Acids		
Caffeic Acid	- in a MMC-induced SCE assay in human lymphocytes, 100 $\mu$ M caffeic acid enhanced MMC-induced SCEs by 55%; 100 $\mu$ M caffeic acid alone enhanced MMC-induced SCEs by 26%	6
	- caffeic acid is reported to penetrate skin and have UV photoprotective activity; an IARC report stated that there was sufficient evidence for carcinogenicity in animals, but no data on carcinogenicity in humans – caffeic acid was possibly carcinogenic to humans	76,80

**Table 6. Toxicity information on some components of *Vitis Vinifera* (grape)**

Component	Toxicity information	
	- the carcinogenic potency of caffeic acid, estimated based on an average human intake of 1 mg/kg bw/day, was less than 1000 cancer cases per 1,000,000 individuals; in rats 1 or 2% (10,000 or 20,000 ppm) caffeic acid in the diet for 51 weeks to 2 years induced papillomas of the forestomach and renal adenomas; one study in which rats were exposed to 2% (20,000 ppm) caffeic acid in the diet for 2 yrs showed treatment-induced carcinomas of the forestomach, whereas two studies with shorter exposure durations showed no such effect; caffeic acid was shown to exert strong promotion activity for forestomach carcinogenesis; chronic exposure to caffeic acid in the diet induced hyperplasia of the forestomach (mice, rats, and hamsters), hyperplasia of the kidney (mice and rats), and increased liver and kidney wts (rats); few toxic effects resulted from acute exposure; subchronic dietary exposures did not induce clinical symptoms of toxicity, however, hyperplasia of the forestomach was observed; some genotoxic effects seen in vitro but not in vivo	77
Ferulic Acid	- in an SCE assay, ferulic acid did not affect SCEs in the presence of absence of MMC - this acid is reported to penetrate skin and have UV photoprotective activity	6 76
Phytosterols	oral studies demonstrate that phytosterols and phytosterol esters are not significantly absorbed and do not result in systemic exposure; small amounts did appear in the ovaries; well-defined phytosterols and phytosterol esters are not estrogenic and do not pose a hazard to reproduction; phytosterols were not mutagenic in bacterial and mammalian systems	81
Tannins	IARC has concluded that tannins are not classifiable to their carcinogenicity	82
Leucocyanidin	without stating any details, a review source stated this substance has been reported to be toxic to some laboratory animals; symptoms included cardiac failure and hepatic lesions	14
Terpene Alcohols Non-Cyclic		
citronellol	- percutaneous absorption, 954 µg/cm <sup>2</sup> /h through human cadaver skin; ocular irritant in rabbit eyes (undiluted)	83
D,L-citronellol	- dermal LD <sub>50</sub> in rabbits, 2650 mg/kg; oral LD <sub>50</sub> in rats, 3450 mg/kg; dietary NOAEL in rats in a 12 wk study, 50 mg/kg bw/day; inhalation NOAEC in rats in a 100 day inhalation study, 0.3 mg/m <sup>3</sup> ; not mutagenic in an Ames assay with activation, a rec-assay, or a host-mediated assay; undiluted, dermal irritant in guinea pigs and rabbits in most tests; mostly not an irritant in clinical testing at up to 40%, irritation was reported in a study at 32% in acetone; not a sensitizer in a Buehler (2.5-25%) or maximization (max.) test (10%) in guinea pigs, positive reaction at 50% (but not ≤25% in mice; not a sensitizer in an HRIPT at 25%	83
geraniol	- dermal LD <sub>50</sub> in rabbits, >5000 mg/kg; oral LD <sub>50</sub> in rats, 3600 mg/kg; no adverse effects in rats in dietary studies with ≤1000 mg/kg bw/day for up to 16 wks and with 100 mg/kg bw/day for 27 wks; not mutagenic in an Ames test or rec-assay, equivocal results with regard to polyploidy in one chromosome aberration test at up to 0.125 mg/ml in DMSO and inconclusive results in another at up to 156.3 µg/ml, and not genotoxic in a bone marrow micronucleus assay; undiluted was a dermal irritant in rabbits in most single application tests and a primary irritation study and 30 and 100% in ethanol caused irritation in a primary irritation study in guinea pigs; mixed irritation results in clinical studies, but generally <10% was not irritating; ocular irritant in rabbit eyes (12.5% and undiluted); mixed results in LLNA assays, but mostly sensitizing at 30 and 50, and mixed results in guinea pig sensitization studies, with both positive and negative results at 10%; not a sensitizer in multiple HRIPTs at 2-12.5%, 20 positive reactions in a max. study at 5% in pet. in 25 subjects, 2 positive reactions in a modified Draize test at 10% in alcohol in 73% volunteers, not a sensitizer in other clinical max. studies with 5-6% in pet; not phototoxic at 5% in pet. in clinical testing	83
nerol	- dermal LD <sub>50</sub> in rabbits, >5000 mg/kg; oral LD <sub>50</sub> in rats, 4500 mg/kg; some erythema (+ rxn in 2 and ± rxn in 8/314 subjects) with up to 0.5%; ocular irritant in rabbit eyes (undiluted); not a sensitizer in guinea pigs at up to 4%; not a sensitizer at 4% in pet. in a clinical max. study	83
Cyclic α-terpineol	- oral LD <sub>50</sub> in mice, 2830 mg/kg; 1000 mg/kg bw/day for 2 wks caused reduced body wt gains and an increase in serum cholesterol; not mutagenic in an Ames test or mouse lymphoma assay; did not induce pulmonary tumors in mice given i.p. injections; a derma irritant in animals studies, but not a dermal irritant in a 4-h clinical study; not a sensitizer in guinea pigs; in clinical patch tests, 5% in pet. had 1/1606 positive and 11/1606 questionable reactions in one study and 2/1200 positive reactions in another	83
Triterpene Alcohols	hepatoprotective and anti-carcinogenic activity has been suggested for lupeol; no toxicity data were available; triterpene alcohols were considered to have intermediate risk	76

**Table 7. Frequency and concentration of use according to duration and type of exposure**

	<b>Vitis Vinifera (Grape)</b>		<b>Vitis Vinifera (Grape) Bud Extract</b>		<b>Vitis Vinifera (Grape) Fruit Extract</b>	
	<i># of Uses<sup>18</sup></i>	<i>Max. Conc. of Use (%)<sup>19</sup></i>	<i># of Uses<sup>18</sup></i>	<i>Max. Conc. of Use (%)<sup>19</sup></i>	<i># of Uses<sup>18</sup></i>	<i>Max. Conc. of Use (%)<sup>19</sup></i>
<b>Totals*</b>	<b>4</b>	<b>0.1</b>	<b>NR</b>	<b>0.08</b>	<b>238</b>	<b>0.000001-2</b>
<b>Duration of Use</b>						
<i>Leave-On</i>	3	NR	NR	NR	195	0.00001-0.7
<i>Rinse Off</i>	1	0.1	NR	0.08	41	0.000001-2
<i>Diluted for (Bath) Use</i>	NR	NR	NR	NR	2	0.05
<b>Exposure Type</b>						
Eye Area	NR	NR	NR	NR	21	0.002-0.6
Incidental Ingestion	NR	NR	NR	NR	13	0.0005-0.6
Incidental Inhalation-Spray	NR	NR	NR	NR	1	0.0001 <sup>a</sup> -0.05
Incidental Inhalation-Powder	NR	NR	NR	NR	1	0.00005-0.002
Dermal Contact	3	0.1	NR	NR	209	0.00001-2
Deodorant (underarm)	NR	NR	NR	NR	1 <sup>b</sup>	NR
Hair - Non-Coloring	1	NR	NR	0.08	12	0.0005-0.3
Hair-Coloring	NR	NR	NR	NR	4	0.002-0.3
Nail	NR	NR	NR	NR	NR	0.00001-0.00007
Mucous Membrane	NR	0.1	NR	NR	20	0.000002-0.6
Baby Products	NR	NR	NR	NR	NR	0.00001
	<b>Vitis Vinifera (Grape) Fruit Powder</b>		<b>Vitis Vinifera (Grape) Fruit Water</b>		<b>Vitis Vinifera (Grape) Juice</b>	
	<i># of Uses<sup>18</sup></i>	<i>Max. Conc. of Use (%)<sup>19</sup></i>	<i># of Uses<sup>18</sup></i>	<i>Max. Conc. of Use (%)<sup>19</sup></i>	<i># of Uses<sup>18</sup></i>	<i>Max. Conc. of Use (%)<sup>19</sup></i>
<b>Totals*</b>	<b>2</b>	<b>NR</b>	<b>10</b>	<b>0.7-0.8</b>	<b>9</b>	<b>0.01-2</b>
<b>Duration of Use</b>						
<i>Leave-On</i>	NR	NR	9	0.7-0.8	7	0.01-0.2
<i>Rinse Off</i>	NR	NR	1	NR	2	2
<i>Diluted for (Bath) Use</i>	2	NR	NR	NR	NR	NR
<b>Exposure Type</b>						
Eye Area	NR	NR	NR	NR	1	NR
Incidental Ingestion	NR	NR	NR	0.8	NR	NR
Incidental Inhalation-Spray	NR	NR	1	NR	NR	NR
Incidental Inhalation-Powder	NR	NR	NR	0.7	NR	0.01
Dermal Contact	2	NR	10	0.7	9	0.01-2
Deodorant (underarm)	NR	NR	NR	NR	NR	NR
Hair - Non-Coloring	NR	NR	NR	NR	NR	NR
Hair-Coloring	NR	NR	NR	NR	NR	NR
Nail	NR	NR	NR	NR	NR	NR
Mucous Membrane	2	NR	NR	0.8	NR	NR
Baby Products	NR	NR	NR	NR	NR	NR
	<b>Vitis Vinifera (Grape) Juice Extract</b>		<b>Vitis Vinifera (Grape) Leaf Extract</b>		<b>Vitis Vinifera (Grape) Seed</b>	
	<i># of Uses<sup>18</sup></i>	<i>Max. Conc. of Use (%)<sup>19</sup></i>	<i># of Uses<sup>18</sup></i>	<i>Max. Conc. of Use (%)<sup>19</sup></i>	<i># of Uses<sup>18</sup></i>	<i>Max. Conc. of Use (%)<sup>19</sup></i>
<b>Totals*</b>	<b>7</b>	<b>NR</b>	<b>80</b>	<b>0.01-3</b>	<b>3</b>	<b>0.05-0.08</b>
<b>Duration of Use</b>						
<i>Leave-On</i>	1	NR	60	0.01-3	1	0.05-0.08
<i>Rinse Off</i>	6	NR	17	NR	1	NR
<i>Diluted for (Bath) Use</i>	NR	NR	3	NR	1	NR
<b>Exposure Type</b>						
Eye Area	NR	NR	3	NR	NR	NR
Incidental Ingestion	NR	NR	NR	0.02	NR	NR
Incidental Inhalation-Spray	NR	NR	5 <sup>a</sup>	3	NR	NR
Incidental Inhalation-Powder	NR	NR	NR	NR	NR	NR
Dermal Contact	1	NR	74	0.01-3	3	0.05-0.08
Deodorant (underarm)	NR	NR	NR	NR	NR	NR
Hair - Non-Coloring	5	NR	6	NR	NR	NR
Hair-Coloring	1	NR	NR	NR	NR	NR
Nail	NR	NR	NR	NR	NR	NR
Mucous Membrane	NR	NR	10	0.02	1	NR
Baby Products	NR	NR	NR	NR	NR	NR

**Table 7. Frequency and concentration of use according to duration and type of exposure**

Totals*	Vitis Vinifera (Grape) Seed Extract		Vitis Vinifera (Grape) Seed Powder		Vitis Vinifera (Grape) Shoot Extract	
	# of Uses <sup>18</sup>	Max. Conc. of Use (%) <sup>19</sup>	# of Uses <sup>18</sup>	Max. Conc. of Use (%) <sup>19</sup>	# of Uses <sup>18</sup>	Max. Conc. of Use (%) <sup>48</sup>
	495	0.00002 -0.2	1	NR	NR	0.00005 – 0.003
Duration of Use						
Leave-On	369	0.00002- 0.2	1	NR	NR	0.00005
Rinse Off	118	0.00008–0.1	NR	NR	NR	0.003
Diluted for (Bath) Use	8	0.002-0.003	NR	NR	NR	NR
Exposure Type						
Eye Area	19	0.0002-0.09	NR	NR	NR	NR
Incidental Ingestion	18	0.0002	NR	NR	NR	NR
Incidental Inhalation-Spray	28 <sup>a</sup>	pump spray: 0.00002 0.0002–0.02	NR	NR	NR	NR
Incidental Inhalation-Powder	4	0.0002	NR	NR	NR	0.00005
Dermal Contact	411	0.0002-0.2	1	NR	NR	0.003
Deodorant (underarm)	NR	NR	NR	NR	NR	NR
Hair - Non-Coloring	62	0.00002-0.1	NR	NR	NR	NR
Hair-Coloring	1	NR	NR	NR	NR	NR
Nail	1	0.001	NR	NR	NR	NR
Mucous Membrane	60	0.0002-0.02	NR	NR	NR	0.003
Baby Products	NR	NR	NR	NR	NR	NR
Totals*	Vitis Vinifera (Grape) Vine Extract					
	# of Uses <sup>18</sup>	Max. Conc. of Use (%) <sup>19</sup>				
	11	0.004				
Duration of Use						
Leave-On	10	0.004				
Rinse Off	1	NR				
Diluted for (Bath) Use	NR	NR				
Exposure Type						
Eye Area	2	NR				
Incidental Ingestion	NR	NR				
Incidental Inhalation-Spray	NR	NR				
Incidental Inhalation-Powder	NR	NR				
Dermal Contact	10	0.004				
Deodorant (underarm)	NR	NR				
Hair - Non-Coloring	1	NR				
Hair-Coloring	NR	NR				
Nail	NR	NR				
Mucous Membrane	NR	NR				
Baby Products	NR	NR				

\* Because each ingredient may be used in cosmetics with multiple exposure types, the sum of all exposure types may not equal the sum of total uses  
NR – not reported

<sup>a</sup> Includes suntan preparations, and it is not known whether or not those products are sprays

<sup>b</sup> It is not known whether or not this product is a pump or a spray

**Table 8. Ingredient Not Reported to be Used**

Vitis Vinifera (Grape) Flower Extract  
Vitis Vinifera (Grape) Leaf Oil  
Vitis Vinifera (Grape) Leaf/Seed/Skin Extract  
Vitis Vinifera (Grape) Leaf Water  
Vitis Vinifera (Grape) Leaf Wax  
Vitis Vinifera (Grape) Root Extract  
Vitis Vinifera (Grape) Skin Extract  
Vitis Vinifera (Grape) Skin Powder  
Vitis Vinifera (Grape) Vine Sap  
Hydrolyzed Grape Fruit  
Hydrolyzed Grape Skin

**Table 9. Repeated Dose Toxicity Studies**

Ingredient	Extraction Solvent	Animals/Group	Study Duration	Dose/Concentration	Results	Reference
<b>DIETARY</b>						
<i>Vitis Vinifera (Grape) Seed Extract</i>						
grape seed extract containing 89.3% proanthocyanidin	not specified	SKH-1 hairless mice, 20F	3 wks	0, 0.2, or 0.5%	- no significant difference in body weights or other signs of toxicity -no gross differences observed in the organs of treated and untreated mice	34
as above	water and ethanol	F344/DuCrj rats, 10M/10F	90 days	0, 0.02, 0.2, or 2%	- no mortality in any of the grps - no clinical signs of toxicity - the few slight but statistically significant changes in organ weights noted, primarily in the 0.2% group, were not dose-dependent. - no treatment-related microscopic changes were observed	27
grape seed extract composed of ~90.5% total phenols	not stated	Sprague-Dawley rats, 20M/20F	90 days	0, 0.62, 1.25, or 2.50%; mean test article intake was 434, 860, and 1788 mg/kg bw/day for males; 540, 1052, and 2167 mg/kg bw/day for females)	- no mortality - a mild head-tilt in 6 of 20 female rats in the 2.5% grp; the researchers remarked that it was doubtful this observation was treatment-related - a small but statistically significant increase in feed consumption by males of the 2.5% grp from day 7 until study termination; similar increases were observed for males of the 1.25% grp, but the occurrence was at irregular intervals - body wts and body wt gains were similar for treated and control grps - a decrease in heart/body wt ratio in females of the 1.25% grp was not considered treatment-related. - no gross or microscopic lesions were reported at necropsy - the NOAEL was ~2150 mg/kg bw/day for female rats and 1780 mg/kg bw/day for male rats	84
grape seed extract that contained <5.5% catechin monomers	water	Sprague-Dawley rats, 20M/20F	90 days	0, 0.5, 1.0, or 2.0%; extract intake was 348, 642, and 1586 mg/kg bw/day for males; 469, 883, and 1928 mg/kg bw/day for females	- no mortality and no clinical signs of toxicity - feed consumption was increased in test grps compared to controls; increases by males of the 2.0% grp reached statistical significance, with no corresponding increase in body wts or body wt gains - no differences in organ wts between the test and control groups - differences in clinical chemistry and hematology parameters between the test and control grps were not considered to be toxicologically significant - no test-article related gross or microscopic lesions were observed	85
Vitis Vinifera (Grape) Seed Extract (as ActiVin)	water-ethanol	female B6C3F <sub>1</sub> ; no/grp not specified	6 mos	0, 100, 250, or 500 mg/kg bw/day	- no treatment-related mortality; - no significant changes in body wt or physical appearance - no significant differences in BUN levels or ALT and CK activity between treated and control animals - no gross or microscopic lesions were observed	13
Vitis Vinifera (Grape) Seed Extract (as ActiVin)	water-ethanol	male B6C3F <sub>1</sub> ; no/grp not specified	12 mos; animals were killed at 90-day intervals	100 mg/kg bw/day	- no treatment-related mortality - no significant changes in body weight or physical - no significant differences in BUN levels or ALT and CK activity - no gross or microscopic lesions - hepatic genomic DNA fragmentation was monitored as an index of oxidative DNA damage; no significant changes were observed	13

**Table 9. Repeated Dose Toxicity Studies**

Ingredient	Extraction Solvent	Animals/Group	Study Duration	Dose/Concentration	Results	Reference
<i>Vitis Vinifera (Grape) Skin Extract</i>						
grape skin extract containing 87.3% total phenols expressed as gallic acid equivalents	not specified	Sprague-Dawley rats, 20M/20F	90 days	2.5%; mean test article intake was 1788 mg/kg bw/day for males and 2167 mg/kg bw/day for females	<ul style="list-style-type: none"> <li>- no mortality; no clinical signs of toxicity</li> <li>- small but statistically significant increase in feed consumption by treated male however, body wts and body wt gains were similar for treated and control grps</li> <li>- statistically significant changes in some hematology measurements were noted at study termination, but none were considered clinically relevant</li> <li>- statistically significant decrease in absolute and relative heart wt of female test animals was not considered treatment-related</li> <li>- no gross lesions were reported</li> <li>- a common renal cortical inflammation of minimal severity, comprised predominantly of lymphocytic interstitial filtrates, was observed in 11 of the male test animals; this was stated to be a common lesion seen in male rats and not considered treatment-related</li> <li>- the NOAEL was approximately 2150 mg/kg bw/day for female rats and 1780 mg/kg bw/day for male rats</li> </ul>	84
<i>Grape Colour Extract</i>						
“grape color powder” consisting of 40% of the naturally occurring grape-color extract in a malto-dextrin carrier	---	Beagle dogs, 4M/4F	90 days	0, 7.5, or 15% (w/w) - a control grp was fed a diet containing 9% malto-dextrin (w/w)	<ul style="list-style-type: none"> <li>- physical appearance and behavior were normal for all dogs</li> <li>- body wt gains in the high dose grp were statistically significantly decreased compared to the controls, while feed consumption was comparable for test and control animals</li> <li>- , no significant differences in absolute or relative organ wts between treated and control animals</li> <li>- no significant differences in ophthalmic, clinical chemistry, hematology, or urinary parameters between the group</li> <li>- no gross or microscopic lesions were noted</li> </ul>	86

Abbreviations: ALT = serum alanine aminotransferase BUN = blood urea nitrogen; CK = serum creatinine kinase grp = groups; NOAEL = no-observed adverse effect level; wt = weight

**Table 10. Genotoxicity studies**

Concentration/Vehicle	Procedure	Test System	Results	Reference
<b>IN VITRO</b>				
<b>Grape Fruit</b>				
fractions of raw grapes (concentration not specified);	Ames test	<i>Salmonella typhimurium</i> TA 98 and TA100, with and without metabolic activation; grapes were washed, peeled, trimmed, and seeded; 250 g sample was blended with 500 ml water and fractionated; fractions were obtained with chloroform and n-butanol (fraction 5), water (fraction 7), methanol (fraction 3) or hexane (fraction 4)	was mutagenic in TA98 and TA100 without metabolic activation for all fractions except fraction 7	30
75-350 µg/ml methanolic extracts of red grapes	SCE assay; MMC-induced	human lymphocytes	enhanced MMC-induced SCEs in a dose-dependent manner; no effect on SCEs without MMC	6
75-350 µg/ml water extracts of red grapes	SCE assay; MMC-induced	human lymphocytes	statistically significant increase in MMC-induced SCEs at 300 µg/ml; no effect on SCEs without MMC	6
75-350 µg/ml methanolic extract of white grapes	SCE assay; MMC-induced	human lymphocytes	enhanced MMC-induced SCEs in a dose-dependent manner; no effect on SCEs without MMC	6
75-350 µg/ml water extract of white grapes	SCE assay; MMC-induced	human lymphocytes	enhanced MMC-induced SCEs in a dose-dependent manner; no effect on SCEs without MMC	6
<b>Grape Juice</b>				
grape juice fractions (genus and species not stated) from canned or bottled juice in DMSO	Ames test	<i>S. typhimurium</i> TA 98 and TA100, with and without metabolic activation	marked mutagenic activity	31
0.25-1.0 ml commercially available white grape juice (genus and species not stated)	Ames test	<i>S. typhimurium</i> TA97, TA98, TA100, TA102, TA104, and TA1530 with and without metabolic activation	without metabolic activation, a positive mutagenic response was observed in all strains except TA102; toxicity was observed with TA102; TA104 was the most sensitive; metabolic activation did not affect response; response was not due to histidine	32
0.25-1.0 ml of 3 commercial brands of white grape juice (genus and species not stated)	Ames test	<i>S. typhimurium</i> TA104 without metabolic activation	positive response with all 3 brands, but there was considerable difference in the potency of the response that was not attributable to the amount of solids	32
0.25-1.0 ml fresh grape juice (genus and species not stated)	Ames test	<i>S. typhimurium</i> TA104 without metabolic activation	concentration-dependent mutagenic response	32
white grape juice (genus and species not stated)	examined the role of phenols, quinones, and reactive oxygen species in the mutagenicity of white grape juice in the Ames test		mutagenicity was markedly suppressed by reduced glutathione, but was not influenced by superoxide dismutase or catalase; polyphenol oxidase-mediated oxidation of grape juice phenolics generates species that can induce mutations	87
<b>Grape Seed Extract</b>				
19-1250 µg/plate; extracted with water and ethanol; extract contained 89.3% proanthocyanidins	Ames test	<i>S. typhimurium</i> TA 98 and TA100, with and without metabolic activation	negative	27
156-5000 µg/plate; extracted with water and ethanol; extract contained 89.3% proanthocyanidins	Ames test	<i>S. typhimurium</i> TA1535 and TA1537, with and without metabolic activation	negative	27



**Table 10. Genotoxicity studies**

Concentration/Vehicle	Procedure	Test System	Results	Reference
9.4-37.5 µg/ml; extracted with water and ethanol; extract contained 89.3% proanthocyanidins	chromosomal aberration assay	CHL cells exposed for 24-48 h without metabolic activation	negative	27
18.8-75 µg/ml; extracted with water and ethanol; extract contained 89.3% proanthocyanidins	chromosomal aberration assay	CHL cells exposed for 18 h without metabolic activation	negative	27
18.8-300 µg/ml; extracted with water and ethanol; extract contained 89.3% proanthocyanidins	chromosomal aberration assay	CHL cells exposed for 6 h with metabolic activation	negative	27
1, 4, or 20 µM; extract contained 95% proanthocyanidins	comet assay	3 murine keratinocytes cell line were pre-treated with the extract	protective effect; comet length decreased in a dose-dependent manner	38
<b>Grape Seed/Grape Skin Extract</b>				
50-5000 µg/plate; extracted with ethanol; extract contained 76% of total phenols	Ames test	<i>S. typhimurium</i> TA1535, TA1537, TA98 and TA100, with and without metabolic activation	weakly mutagenic	26
9.7 and 19.5 µg/ml; extracted with ethanol; extract contained 76% of total phenols	chromosomal aberration assay	human lymphocytes	negative	26
<b>PHOTOMUTAGENICITY – IN VITRO</b>				
<b>Grape Skin</b>				
0.001-10 mg/ml grape skin color ( <i>Vitis vinifera</i> or <i>Vitis labrusca</i> ) in PBS	Ames test of irradiated color: the color was irradiated with 4 black light bulbs (FL15BL-B) that emit light between 300-400 nm; most of the UVB was filtered; the bacterial suspension was irradiated for 30 min with 1.25 J/cm <sup>2</sup> UVA	<i>S. typhimurium</i> TA98, TA100, and TA102 with and without metabolic activation	no significant increase in mutations compared to irradiated suspension with grape skin color; 10 mg/ml non-irradiated grape-skin color was not mutagenic	88
0.01-1 mg/ml grape skin color ( <i>Vitis vinifera</i> or <i>Vitis labrusca</i> ) in PBS	photocytotoxicity; cell survival was measured before UVA, 1 h after UVA, and after 1 h UVA irradiation and 24h incubation	WTK-1 cells	delayed cytotoxicity was observed with 1 mg/ml following 24 h incubation after UVA exposure	88
<b>IN VIVO</b>				
<b>Grape Seed Extract</b>				
0, 0.5, 1, or 2 g/kg in distilled water; extracted with water and ethanol; extract contained 89.3% proanthocyanidins	micronucleus test	5 or 6 mice were dosed orally; dose was repeated after 24 h	negative	27
0, 0.5, 1, or 2 g/kg in 0.5% aq. CMC; extract contained 90.5% total phenols by wt (genus and species not stated)	micronucleus test	6 male mice/group were dosed by gavage at a volume of 20 ml/kg; 24 h harvest for all doses; 48 h harvest for 0 and 2 g/kg groups	1 high-dose animal found dead 1h after dosing; cytotoxic (statistically significant decrease in the PCE:NCE ratio) at the 2 g/kg - 48-h harvest; no other cytotoxic effects were observed; not clastogenic	33
<b>Grape Seed/Grape Skin Extract</b>				
2 g/kg in saline; extracted with ethanol; extract contained 76% of total phenols	micronucleus test	6 female Wistar rats; blood samples were taken after 48 and 72 h	statistically significant increase in micronuclei after 48 h, but not after 72 h	26
<b>Grape Skin Extract</b>				
0, 0.5, 1, or 2 g/kg in 0.5% aq. CMC; extract contained 87.3% total phenols by wt (genus and species not stated)	micronucleus test	6 male mice/group were dosed by gavage at a volume of 20 ml/kg; 24 h harvest for all doses; 48 h harvest for 0 and 2 g/kg groups	no clinical signs of toxicity; not cytotoxic or clastogenic	33

Abbreviations: CMC = carboxymethylcellulose; DMSO – dimethyl sulfoxide; MMC = mitomycin C; PBS = phosphate-buffered saline; PCE:NCE = polychromatic erythrocyte: normochromatic erythrocyte; SCE = sister chromatid exchange;

**Table 11. Inhibition of Tumor Promotion**

Test Article	Dose/Vehicle	Animals/Group	Procedure	Results	Reference
<b>DERMAL APPLICATION</b>					
<b>Grape</b>					
total extract of <i>Vitis vinifera</i> (all active ingredients of the plant); ethanolic fraction was used	5 and 10 mg/kg	20 Swiss albino female mice	- DMBA-initiation (40 µg/0.2 ml acetone) - after 2 wks, TPA-promotion (5 µg/0.2 ml acetone) - extract topically applied 1 h prior to TPA - applications made 2x/wk for 20 wks	time of appearance of first tumor was delayed by 3 wks (wk 9 vs. wk 6); dose-dependent inhibition of skin tumorigenesis; the number of mice with tumors was inhibited 40-50% and the number of tumors per mouse (tumor multiplicity) was inhibited 16-27%	89
<b>Grape Seed</b>					
grape seed polyphenols as a lyophilized powder containing 95% (w/w) polyphenols; extracted with ethyl acetate	0, 0.5, and 1.5 mg/mouse applied in 0.1 ml acetone	20 female SENCAR mice	- DMBA-initiation (10 µg/0.1 ml acetone); 1 wk after initiation: Group 1 – 0.1 ml acetone applied Group 2 – 0.5 mg grape seed powder in acetone Group 3 – 1.5 mg grape seed powder in acetone - 30 min after application, TPA promotion (2 µg/0.1 ml acetone) in groups 1-3; applications were made 2x/wk for 19 wks Group 4 – 0.1 ml acetone applied; no DMBA initiation Group 5 – 1.5 mg grape seed powder in acetone applied, starting 1 wk after DMBA initiation, 2x/wk for 19 wks -no TPA promotion in groups 4 or 5	Groups 1-3: time of appearance of the tumor in Groups 2 and 3 was delayed by 1 and 2 wks, respectively, compared to Group 1; grape seed powder significantly inhibited TPA tumor promotion in a dose-dependent manner as evidenced by a reduction in tumor incidence (35 and 60% inhibition), total number of tumors (61-83% inhibition), and tumor volume per mouse (48 and 63% decrease); tumor growth was not significantly inhibited Group 4: no skin tumors were observed when grape seed powder was evaluated as a promoter - there were no differences in wt gain between animals exposed to grape seed powder and those that were not	35
grape seed polyphenolic fraction	0, 5, 10, or 20 mg in 0.4 ml acetone	20 female CD-1 mice	- DMBA-initiation (50 µg/0.2 ml acetone) - 2 wks later, grape seed was topically applied - 20 min after application, TPA promotion (5.2 µg/0.2 ml acetone) - applications were made 2x/wk for 15 wks	tumor incidence was inhibited by 30, 40, and 60% with 5, 10, or 20 mg grape pre-treatment, respectively; tumor multiplicity was significantly reduced 63, 51, and 94%, respectively; the % of tumors classified as papillomas was 94, 88, 97, and 100% in the 0, 5, 10, and 20 mg groups, and the remaining tumors were carcinomas	36
grape seed polyphenolic fraction	0 or 20 mg in 0.4 ml acetone	10 female CD-1 mice	- DMBA initiation, as above - 2 wks later, acetone or grape seed extract was applied dermally 2x/wk for 15 wks - no TPA promotion	no tumors were observed in animals of either group	36
<b>Grape Seed Extract</b>					
grape seed extract containing 95% proanthocyanidins	0, 1, 2.5, or 5 µmol in 0.2 ml acetone	female SENCAR mice, no. per group not specified	- DMBA (0.1 µmol in 0.2 ml acetone) applied topically 2x/wk for 4 wks - extract applied 20 min prior to DMBA	DMBA alone induced dermal hyperplasia, increasing epidermal thickness by 4.6 times the normal average; grape seed extract inhibited DMBA-induced hyperplasia in a dose-dependent manner; DMBA induced mutations in the Ha-ras oncogene; the extract had a dose-dependent inhibitory effect on the number of animals with Ha-ras mutations	38
grape seed extract containing 95% proanthocyanidins	0, 1, and 2.5 µmol	female SENCAR mice, no. per group not specified	- DMBA (0.1 µmol in 0.2 ml acetone) applied topically 2x/wk for 4 wks - extract applied 20 min prior to DMBA	DMBA alone increased epidermal thickness 5x as well as the PCNA level; application of the extract statistically significantly inhibited both increases in a dose-dependent manner	39
<b>Grape Fruit Powder/Grape Seed Extract</b>					
freeze-dried grape powder (from fresh red, green, and blue-black Cal. grapes; genus/species not stated); powdered grape seed extract containing 95% proanthocyanidins	1, 2, or 4 mg each	15 female SENCAR mice	- DMBA (0.1 µmol; vol. 0.2 ml), 2x/wk for 4 wks - 30 min after DMBA application, grape test article was applied - 5 mice/group were killed 2 days, 4 wks, or 8 wks after dosing - some animals were dosed for 24 wks	DMBA treatment produced epidermal hyperplasia, and both grape test substances inhibited the hyperplasia; % PCNA-positive cells decreased in a dose-dependent manner, and the change was statistically significant with 4 mg topical powder for the animals killed after 24 wks, there was clear reduction in the number of papillomas in animals dosed with 2 mg grape powder	41

**Table 11. Inhibition of Tumor Promotion**

Test Article	Dose/Vehicle	Animals/Group	Procedure	Results	Reference
<b>DIETARY ADMINISTRATION</b>					
<b><i>Grape Fruit Powder</i></b>					
freeze-dried grape powder (from fresh red, green, and blue-black Cal. grapes genus/species not stated)	1, 2, or 5%	15 female SENCAR mice	mice were given treated feed 2 wk prior to DMBA for up to 12 wks - DMBA (0.1 $\mu$ mol; vol. 0.2 ml), 2x/wk for 4 wks - some animals were given treated feed for 24 wks	DMBA treatment produced epidermal hyperplasia, dietary grape powder inhibited the hyperplasia; % PCNA-positive cells decreased in a dose-dependent manner with treated feed, and the change was statistically significant with 2 and 5% powder in feed for 12 wks for the animals dosed for 24 wks, there was clear reduction in the number of papillomas in animals fed the grape powder	41
<b><i>Grape Seed Extract</i></b>					
grape seed extract containing 95% proanthocyanidins	2 and 4% in feed	female SENCAR mice, no. per group not specified	- rats were fed the extract in the diet - after 2wks of treated diet, DMBA (0.1 $\mu$ mol in 0.2 ml acetone) applied topically 2x/wk for 4 wks	DMBA alone increased epidermal thickness 5x and increased the PCNA level; dietary exposure to the extract statistically significantly inhibited both increases in a dose-dependent manner	39
grape seed extract containing 89% proanthocyanidins	0, 0.2, and 0.5% in feed	20 female C3H/HeN mice	DMBA-initiation (0.4 $\mu$ mol/0.2 ml acetone) - after 1 wk, TPA promotion (0.01 $\mu$ g/0.1 ml acetone); 2x/wk for 27 wks - treated diet was started with TPA application	time of appearance of first tumor was delayed by 4 wks (0.2% group) and 10 wks (0.5% group); tumor incidence decreased 20% in the 0.2% group (not statistically significant) and 35% in the 0.5% group (statistically significant) (12, 8, and 5 mice of the 0, 0.2, and 0.5% groups had tumors); number of tumors per group decreased by 43% (0.2% group) and 70% (0.5% group); tumor size was significantly decreased in both test groups; 20% of the mice given untreated feed developed carcinoma, while only 5% of the mice of the 0.2% group and none in the 0.5% group developed carcinoma	37
as above	0.5% in feed	10 female C3H/HeN mice	DMBA initiation as above - after 1 wk, fed treated diet for 27 wks; no TPA promotion - a control group for spontaneous tumors was treated with 0.2 ml acetone 2x/wk	no tumors were observed in animals of either group	37
as above	0.5% in feed	5 female C3H/HeN mice	- mice were fed treated feed - either 1 wk later, a single application of 5 $\mu$ g TPA was made and the mice were killed after 6, 12, or 24 h or TPA was applied 3x on alternate days and the mice were killed 6 h after the last application - skin edema was measured using skin punches and bi-fold skin thickness measurements	- TPA caused an increase in mean epidermal thickness and vertical thickness of epidermal cell layers - grape seed extract significantly reduced the epidermal thickness after multiple TPA applications and in mice killed 12 and 24 h after a single application of TPA - dietary extract without TPA treatment did not induce an epidermal hyperplastic response - TPA-induced increases in skin punch wt were reduced by feeding the extract; bi-fold skin thickness was also reduced	37
grape seed extract containing 89.3% proanthocyanidins	0, 0.25, and 0.5% in feed	7 male F344 rats	<u>Group 1</u> : control feed for 10 wks <u>Group 2</u> : control feed for 10 wks; after 1 wk, s.c. AOM 1x/wk for 2 wks <u>Group 3</u> : 0.25% in feed for 10 wks; after 1 wk of treated feed, s.c. AOM 1x/wk for 2 wks <u>Group 4</u> : 0.5% in feed for 10 wks; after 1 wk of treated feed, s.c. AOM 1x/wk for 2 wks <u>Group 5</u> : s.c. AOM 1x/wk for 2 wks; 4 wks later, 0.25% in feed for 4 wks <u>Group 6</u> : s.c. AOM 1x/wk for 2 wks; 4 wks later, 0.5% in feed for 4 wks <u>Group 7</u> : 0.5% in feed for 10 wks	intestinal AOM-induced ACF were statistically significantly decreased in groups 3-6 compared to group 2 – the inhibition was stronger in groups 3 and 4 (50-60% inhibition) than in groups 5 and 6 (34-37% inhibition); the number of ACF consisting of 1-4 crypts or >4 crypts was decreased in groups 3-6 compared to group 2; PCNA-positive cells were decreased in groups 3-6 compared to group 2, and the AOM-induced PCNA labeling index in the colonic mucosa was decreased; induction of apoptosis in groups 3-6 as evidence by a significant increase in the number of TUNEL-positive cells	40

**Table 11. Inhibition of Tumor Promotion**

Test Article	Dose/Vehicle	Animals/Group	Procedure	Results	Reference
<b>ANTI-PHOTOCARCINOGENESIS WITH DIETARY ADMINISTRATION</b>					
<i>Grape Seed Extract</i>					
grape seed extract containing 89.3% proanthocyanidins	0, 0.2, and 0.5% in feed	20 female SKH-1 hairless mice	- mice were fed treated feed for 14 days - starting on day 15, the mice were irradiated with 180 mJ/cm <sup>2</sup> every day for 10 days - 1 wk after the last UV exposure, mice were again irradiated with 180 mJ/cm <sup>2</sup> 3x/wk for 29 wks	latency period of tumors was increased by 2 wks by feeding the extract; inhibition of tumor incidence was statistically significant in the 0.5% group (35% inhibition; tumor multiplicity (46 and 65% with 0.2 and 0.5%, respectively), tumor size expressed in terms of total tumor volume per group or total tumor volume per tumor bearing mouse, and avg. tumor volume per tumor was significantly inhibited at both doses	34
grape seed extract containing 89.3% proanthocyanidins	0 and 0.5% in feed	20 female SKH-1 hairless mice	same protocol as above performed to examine effect on malignant conversion of papillomas into carcinomas	45% prevention by extract in terms of carcinoma incidence; prevention of UVB-induced transformation of benign papillomas to carcinomas was 65%, but when analyzed in terms of number carcinomas per carcinoma bearing mouse, there was no inhibition by the extract	34
grape seed extract containing 89.3% proanthocyanidins	0 and 0.5% in feed	20 female SKH-1 hairless mice	- mice were fed treated feed for 14 days - starting on day 15, the mice were irradiated with 180 mJ/cm <sup>2</sup> every day for 10 days - 1 wk after the last UV exposure, both groups were treated topically with TPA (0.01 µmol/0.1 ml acetone); 3x/wk for 23 wks	latency period of tumors was increased by 2 wks by feeding the extract; a highly significant reduction in tumor incidence was observed (95%); between wks 13-15 of promotion, 10-20% of extract-fed mice developed tumors that regressed later; since these tumors were not present at the termination of the study, they were not included in tumor multiplicity and tumor multiplicity decreased by 95%; total tumor volume per group and per tumor bearing mouse was reduced	34
grape seed extract containing 89.3% proanthocyanidins	0 and 0.5% in feed	20 female SKH-1 hairless mice	- DMBA initiation (51.2 µg/0.01 ml acetone) - after 1 wk, UVB irradiation (promotion; 180 mJ/cm <sup>2</sup> ); 3x/wk for 24 wks - treated diet was started with UVB exposure	latency period of tumors was increased by 3 wks by feeding the extract; feeding the extract resulted in a 60% reduction in the total number of tumors per group, a 74% reduction in total tumor volume per group, a 63% reduction in terms of tumor volume per tumor bearing mouse, and a 29% reduction in average tumor volume per tumor	34

Abbreviations: ACF – aberrant crypt foci; AOM = azoxymethane; DMBA = dimethylbenz[a]anthracene; PCNA = proliferating cell nuclear antigen; TPA = 12-O-tetradecanoylphorbol-13-acetate

**Table 12. Dermal irritation and sensitization**

Test Article	Concentration	Test Pop.	Procedure	Results	Reference
<b>IN VITRO – IRRITATION</b>					
<b><i>Vitis Vinifera (Grape) Fruit Extract</i></b>					
3% in a sample product blend (extracted in water)	neat; test vol., 25 -125 µl	-----	dermal irritation test method, standard volume-dependent dose-response study	predicted to be a non-irritant in human skin; human irritancy equivalent scores ranged from 0.46 to 0.61	90
product containing 10% (extracted in water)	neat	-----	Epiderm MTT viability assay; tissue samples treated for 1, 4, and 24 h	non-irritating/minimal ET <sub>50</sub> was >24 h; irritancy classification	91
<b><i>Hydrolyzed Grape Skin</i></b>					
hydrolyzed grape skin	neat	cultured human keratinocytes (HaCaT cells)	MTT cytotoxicity test ; 0.15 – 5 mg/ml were tested; SLS was used as a positive control	predicted to be non-irritating; the IC <sub>50</sub> was >5 mg/ml IC <sub>50</sub> of SLS was 0.083 mg/ml (irritating)	92
<b>NON-HUMAN - IRRITATION</b>					
<b><i>Vitis Vinifera (Grape) Seed Extract</i></b>					
as trade name ActiVin	neat	New Zealand White rabbits; 3M/3F	4-h semi-occlusive application; 0.5 g of the extract moistened with 0.3 ml deionized water; applied to an intact 1 in x 1 in area of clipped skin; collars were used	classified as moderately irritating all rabbits had slight to severe erythema, very slight to slight edema, and desquamation; erythema completely subsided by day 6, edema by day 8; exfoliation in one animal, eschar in 2 animals; all dermal irritation subsided by day 12	13
<b>HUMAN - IRRITATION</b>					
<b><i>Vitis Vinifera (Grape) Seed Extract</i></b>					
0.15% in an after shave balm (extraction solvents were butylene glycol and water)	neat	31 male subjects	2-wk in-use study; product was applied at least once daily to shave skin of the face and neck	not an irritant; no evidence of erythema, edema, or drying	93
<b>IN VITRO- SENSITIZATION</b>					
<b><i>Hydrolyzed Grape Skin</i></b>					
hydrolyzed grape skin in ethanol	4 and 20 µg/ml	monocyte-like human cell line, THP-1 cells	cells were exposed for 48 h; CD80 and CD86 were used as co-stimulatory molecules; MFI was measured using a FACS; MFI of non-treated THP-1 cells was used as an internal control; nickel sulfate was used as a positive control	did not increase the expression of the investigated markers and did not show any stimulating potential of the immune cellular response mediated by monocyte/ macrophage	94
<b>HUMAN – IRRITATION AND SENSITIZATION</b>					
<b><i>Vitis Vinifera (Grape) Fruit Extract</i></b>					
0.0239% in a foundation	neat	103 subjects	modified HRIPT – semi-occlusive; ; 0.15 ml on a 20 x 20 mm pad; 9 24-h induction applications; 24-h challenge application at treated and untreated sites followed a 17 or 24-day non-treatment period	not an irritant or sensitizer	95
blend containing 3%	tested at 1% aq.	108 subjects	HRIPT - semi-occlusive; 0.02-0.05 ml on a 7.5 mm paper disc; 9 24-h induction applications; challenge application at a previously untreated site after a 10-14 day non-treatment period	not an irritant or sensitizer	96
product containing 6%	10% in deionized water	97 subjects	modified HRIPT - semi-occlusive; ; 150 mg on a 20 x 20 mm pad; 9 24-h induction applications; 24-h challenge at treated site and 48-h challenge at untreated site followed a 10-day non-treatment period	not an irritant or sensitizer	97
product containing 10% (extracted in water)	neat	54 subjects	HRIPT – occlusive; 0.2 ml on a 20 x 20 mm Webril pad; 9 24-h induction applications; ; 24 h challenge at a previously untreated site after a 10-14 day non-treatment period	not an irritant or sensitizer	98
<b><i>Vitis Vinifera (Grape) Juice</i></b>					
make-up primer containing 0.1%	neat	208 subjects	HRIPT – semi-occlusive; same induction protocol; 24-h challenge application applied to a previously untreated site after a 2-wk non-treatment period	not an irritant or sensitizer with the exception of an occasional ± score (barely perceptible erythema), no visible reactions were noted	99

**Table 12. Dermal irritation and sensitization**

Test Article	Concentration	Test Pop.	Procedure	Results	Reference
<b><i>Vitis Vinifera (Grape) Juice Extract</i></b>					
hair styling product containing 0.5%	neat	100 subjects	modified HRIPT – occlusive; 21-day induction period, 10-24 day non-treatment period, 4-day challenge	not an irritant or sensitizer	100
<b><i>Vitis Vinifera (Grape) Seed Extract</i></b>					
body lotion formulation containing 0.0002%	neat	101 subjects	modified HRIPT – occlusive; 21-day induction period, 10-24 day non-treatment period, 4-day challenge	not an irritant or sensitizer	101
hair conditioner containing 0.1%	10% aq. dilution	105 subjects	modified HRIPT – semi-occlusive; ; 0.2 ml on a 20 x 20 mm pad; 9 24-h induction applications, 24-h challenge application at treated and untreated sites followed a 10-day non-treatment period	not an irritant or sensitizer	102
after shave balm containing 0.15% (extraction solvents were butylene glycol and water)	not stated; presumed neat	105 subjects	HRIPT – occlusive; 0.2 ml; air-dried at 20+ min prior to application; 9 24-h induction applications; 24-h challenge followed a 10-day non-treatment period	not a sensitizer; no reactions at challenge during induction, 1 subject had a minimal/doubtful response (?) at readings 2- 4 and erythema (+) was observed at readings 5-8; 1 subject had a ? response at readings 1-2 and one subject had a ? response at reading 2	103
raw material containing 1%	neat	107 subjects	modified HRIPT – semi-occlusive; ; 0.15 ml on a 20 x 20 mm pad; 9 24-h induction applications, 24-h challenge application at treated and untreated sites followed a 10-day non-treatment period	not an irritant or sensitizer five grade 1 and 1 grade 2 response noted during induction; grade 1 response were noted for 3 subjects during challenge	104

Abbreviations: FACS = fluorescence activated cell sorter; HRIPT = human repeated insult patch test; MFI = mean fluorescence intensity; MTT = 3-(4,5-dimethylthiazol-2-yl)-2,5-diphenyl tetrazolium bromide; SLS = sodium lauryl sulfate

## REFERENCES

1. Burnett, CL, Fiume MM, Bergfeld WF, Belsito DV, Hill RA, Klaassen CD, Leibler DC, Marks JG, Shank RC, Slaga TJ, Snyder PW, and Andersen FA. Safety assessment of plant-derived fatty acid oils as used in cosmetics. Washington, D.C., Cosmetic Ingredient Review. 2011. Available from the Cosmetic Ingredient Review, 110117th St., NW, Ste 412, Washington DC 20036; [www.cir-safety.org](http://www.cir-safety.org).
2. Duke JA. Dr. Duke's Phytochemical and Ethnobotanical Databases. Chemicals in *Vitis vinifera* L. (Vitaceae). <http://www.ars-grin.gov/duke/>. 2012. Date Accessed 2-2-2012.
3. Vitalini S, Gardana C, Zanzotto A, Simonetti P, Faoro F, Fico G, and Iriti M. The presence of melatonin in grapevine (*Vitis vinifera* L.) berry tissues. *J Pineal Res.* 2011;51:(3):331-337.
4. Duke JA. *Vitis vinifera* L. [http://www.hort.purdue.edu/newcrop/duke\\_energy/Vitis\\_vinifera.html](http://www.hort.purdue.edu/newcrop/duke_energy/Vitis_vinifera.html). 1998. Date Accessed 2-2-2012.
5. Shi J, Yu J, Pohorly JE, and Kakuda Y. Polyphenolics in Grape Seeds - Biochemistry and Functionality. *Journal of Medicinal Food.* 2003;6:(4):291-299.
6. Stagos D, Spanou C, Margariti M, Stathopoulos C, Mamuris Z, Kazantzoglou G, Magiatis P, and Kouretas D. Cytogenetic effects of grape extracts (*Vitis vinifera*) and polyphenols on mitomycin C-induced sister chromatid exchanges (SCEs) in human blood lymphocytes. *J Agric Food Chem.* 2007;55:(13):5246-5252.
7. Grau Aromatics GmbH & Co KG. 2011. Product Information White Grape Extract HS (*Vitis Vinifera* (Grape) Fruit Extract). Unpublished data submitted by Personal Care Products Council. 1 pages.
8. Hertog MGL, Hollman PCH, and van de Putte B. Content of potentially anticarcinogenic flavonoids of tea infusions, wines, and fruit juices. *J Agric Food Chem.* 1993;41:1242-1246.
9. Grau Aromatics GmbH & Co KG. 2011. Product Information Red Vine Leaves Extract HS 2578 G/B (*Vitis Vinifera* (Grape) Leaf Extract). Unpublished data submitted by Personal Care Products Council. 1 pages.
10. National Toxicology Program. Summary of Data for Chemical Selection. Oligomeric Proanthocyanidins from Grape Seeds and Pine Bark. [http://ntp.niehs.nih.gov/ntp/htdocs/Chem\\_Background/ExSumPdf/GrapeSeeds\\_PineBark.pdf](http://ntp.niehs.nih.gov/ntp/htdocs/Chem_Background/ExSumPdf/GrapeSeeds_PineBark.pdf). 2000. Date Accessed 2-2-2012.
11. Dixon RA, Xie D-Y, and Sharma SB. Proanthocyanidins - a final frontier in flavonoid research? *New Phytologist.* 2005;165:9-28.
12. The United States Pharmacopeia. The National Formulary. USP 33 - NF 28 Reissue. New and Revised Official Text Since the Second Supplement to USP 32-NF 27. Rockville, MD: The United States Pharmacopeial Convention, 2010.
13. Ray S, Bagchi D, Lim PM, Bagchi M, Gross SM, Kothari SC, Preuss HG, and Stohs SJ. Acute and long-term safety evaluation of a novel IH636 grape seed proanthocyanidin extract. *Res Commun Mol Pathol Pharmacol.* 2001;109:(3-4):165-197.
14. Leung AY and Foster S. Encyclopedia of Common Natural Ingredients Used in Food, Drugs, and Cosmetics. 2nd ed. New York, NY: John Wiley & Sons, Inc., 1996.
15. Committee of Experts on Cosmetic Products. Plants in Cosmetics. Plants and plant preparations used as ingredients for cosmetic products. Strasbourg: Council of Europe, 2001.
16. Symrise. 2010. Product Information Neo Actipone® Grape Seed (*Vitis Vinifera* (Grape) Seed Extract.). Unpublished data submitted by Personal Care Products Council. 3 pages.
17. Personal Care Products Council. On-Line INFOBASE Ingredient Database. <http://online.personalcarecouncil.org/jsp/Home.jsp>. Personal Care Products Council: Washington, DC. 2012. Date Accessed 6-12-2012.
18. Food and Drug Administration (FDA). Frequency of use of cosmetic ingredients. *FDA Database.* 2012. Washington, DC: FDA. Received in May.
19. Personal Care Products Council. 6-14-2012. Updated Concentration of use by FDA Product category: Grape-Derived ingredients. Unpublished data submitted by Personal Care Products Council. 5 pages.

20. Bremmer HJ, Prud'homme de Lodder LCH, and Engelen JGM. Cosmetics Fact Sheet: To assess the risks for the consumer; Updated version for ConsExpo 4. 2006. Report No. RIVM 320104001/2006. pp. 1-77.
21. Johnsen MA. The influence of particle size. *Spray Technology and Marketing*. 2004;November:24-27.
22. Rothe H. Special Aspects of Cosmetic Spray Evaluation. 9-26-2011. Unpublished data presented at the 26 September CIR Expert Panel meeting. Washington, D.C.
23. Rothe H, Fautz R, Gerber E, Neumann L, Rettinger K, Schuh W, and Gronewold C. Special aspects of cosmetic spray safety evaluations: Principles on inhalation risk assessment. *Toxicol Lett*. 2011;205(2):97-104.
24. European Commission. European Commission Health and Consumers Cosmetics - Cosing - Database. <http://ec.europa.eu/consumers/cosmetics/cosing/>. 2010. Date Accessed 1-13-2012.
25. The International Programme on Chemical Safety (IPCS). Evaluations of the Joint FAO/WHO Expert Committee on Food Additives (JECFA). Grape Skin Extract. <http://apps.who.int/ipsc/database/evaluations/chemical.aspx?chemID=1445>. World Health Organization (WHO): 2009. Date Accessed 2-9-2012.
26. Lluís L, Muñoz M, Nogués MR, Sánchez-Martos V, Romeu M, Giralt M, Valls J, and Solà R. Toxicology evaluation of a procyanidin-rich extract from grape skins and seeds. *Food Chem Toxicol*. 2011;49(6):1450-1454.
27. Yamakoshi J, Saito M, Kataoka S, and Kikuchi M. Safety evaluation of proanthocyanidin-rich extract from grape seeds. *Food Chem Toxicol*. 2002;40(5):599-607.
28. Yamakoshi J, Otsuka F., Sano A, Tokutake S, Saito M, Kikuchi M, and Kubota Y. Lightening effect on ultraviolet-induced pigmentation of guinea pig skin by oral administration of a proanthocyanidin-rich extract from grape seeds. *Pigment Cell Res*. 2003;16(6):629-638.
29. Becci PJ, Hess FG, Babish JG, Gallo MA, and Voss KA. Reproduction study of grape colour extract in rats. *Food Chem Toxicol*. 1983;21(1):79-83.
30. Stoltz DR, Stavric B, Stapley R, Klassen R, Bendall R, and Krewski, D. Mutagenicity screening of foods. 2. Results with fruits and vegetables. *Environ Mutagen*. 1984;6:343-354.
31. Stoltz, D. R., Stavric, B., Krewski, D., Klassen, R., Bendall, R., and Junkins, B. Mutagenicity screening of foods: 1. Results with beverages. *Environ Mutagen*. 1982;4(4):477-492.
32. Patrinely A, Clifford MN, Walker R, and Ioannides C. Mutagenicity of white grape juice in the Ames test. *Food Chem Toxicol*. 1996;34(6):559-562.
33. Erexson GL. Lack of in vivo clastogenic activity of grape seed and grape skin extracts in a mouse micronucleus assay. *Food Chem Toxicol*. 2003;41(3):347-350.
34. Mittal A, Elmetts CA, and Katiyar SK. Dietary feeding of proanthocyanidins from grape seeds prevents photocarcinogenesis in SKH-1 hairless mice: Relationship to decreased fat and lipid peroxidation. *Carcinogenesis*. 2003;24:1379-1388.
35. Zhao J, Wang J, Chen Y, and Agarwal R. Anti-tumor-promoting activity of a polyphenolic fraction isolated from grape seeds in the mouse skin two-stage initiation-promotion protocol and identification of procyanidin B5-3'-gallate as the most effective antioxidant constituent. *Carcinogenesis*. 1999;20(9):1737-1745.
36. Bomser JA, Singletary KW, Wallig MA, and Smith MA. Inhibition of TPA-induced tumor promotion in CD-1 mouse epidermis by a polyphenolic fraction from grape seeds. *Cancer Lett*. 1999;135(2):151-157.
37. Meeran SM, Vaid M, Punathil T, and Katiyar SK. Dietary grape seed proanthocyanidins inhibit 12-O-tetradecanoyl phorbol-13-acetate-caused skin tumor promotion in 7,12-dimethylbenz[a]anthracene-initiated mouse skin, which is associated with the inhibition of inflammatory response. *Carcinogenesis*. 2009;30(3):520-528.
38. Kowalczyk MC, Walaszek Z, Kowalczyk P, Kinjo T, Hanausek M, and Slaga TJ. Differential effects of several phytochemicals and their derivatives on murine keratinocytes *in vitro* and *in vivo*: implications for skin cancer prevention. *Carcinogenesis*. 2009;30(6):1008-1015.
39. Kowalczyk MC, Kowalczyk P, Tolstykh O, Hanausek M, Walaszek Z, and Slaga TJ. Synergistic effects of combined phytochemicals and skin cancer prevention in SENCAR mice. *Cancer Prev Res*. 2010;3(2):170-178.



40. Velmurugan B, Singh RP, Agarwal R, and Agarwal C. Dietary feeding of grape seed extract prevents azoxymethane-induced colonic aberrant crypt foci formation in Fischer 344 rats. *Mol Carcinog*. 2010;49:(7):641-652.
41. Hanausek M, Spears E, Walaszek Z, Kowalczyk MC, Kowalczyk P, Wendel C, and Slaga TJ. Inhibition of murine skin carcinogenesis by freeze-dried grape powder and other grape-derived major antioxidants. *Nutr Cancer*. 2011;63:(1):28-38.
42. Kalogeromitros D, Rigopoulos D, Gregoriou S, Mousatou V, Lyris N, Papaioannou D, and Katsarou-Katsari A. Asymptomatic sensitisation to grapes in a sample of workers in the wine industry. *Occup Environ Med*. 2004;61:709-711.
43. Yamasaki R, Dekio S, and Jidoi J. Contact dermatitis from grape bud. *Contact Dermatitis*. 1985;12:(4):226-227.
44. BioScreen Testing Services Inc. 2009. Evaluation of one sample Blend 3EL-New (contains 3% Vitis Vinifera (Grape) Fruit Extract (water extract)) utilizing the ocular irritation test method. Unpublished data submitted by the Personal Care Products Council.
45. MB Research Laboratories Inc. 2001. EpiOcular MTT Viability Assay NAB® Grape Extract Contains 10% Vitis Vinifera (Grape) Fruit Extract (water extract). MB Research Project #: MB 01-9685.39. Unpublished data submitted by the Personal Care Products Council.
46. Institute for In Vitro Sciences Inc. 2006. Bovine corneal opacity and permeability assay with optional histology (after shave lotion containing 0.15% Vitis Vinifera (Grape) Seed Extract) Study Number 06AF67.350049. Unpublished data submitted by Personal Care Products Council.
47. ABICH Srl. 2009. *In vitro* evaluation of the eye irritation potential of Hydrolyzed Grape (vitis vinifera) fruit skin. Report No. REL/0444/2009/IRRO/ELB. Unpublished data submitted by Personal Care Products Council. 14 pages.
48. Personal Care Products Council. 7-3-2012. Monograph proof: Vitis Vinifera (Grape) Shoot Extract. Unpublished data submitted by Personal Care Products Council. 1 pages.
49. Food Chemicals Codex. 8 ed. Rockville, MD: United States Pharmacopeia (USP), 2012.
50. Food and Agriculture Organization (FAO). Grape Skin Extract. <http://www.fao.org/ag/agn/iecfa-additives/specs/Monograph1/additive-214-m1.pdf>. 1984. Date Accessed 2-9-2012.
51. Phenbiox SRL. Technical data sheet UVIOX (Hydrolyzed Grape Skin) [pamphlet]. Bologna, Italy: Phenbiox SRL; 2011.
52. Phenbiox SRL. Safety data sheet UVIOX (Hydrolyzed Grape Skin) [pamphlet]. Bologna, Italy: Phenbiox SRL; 2011.
53. Nassiri-Asl M. and osseinzadeh H. Review of the pharmacological effects of Vitis vinifera (Grape) and its bioactive compounds. *Phytother Res*. 2009;23:(9):1197-1204.
54. Heldreth BA, Bergfeld WF, Belsito DV, Hill RA, Klaassen CD, Leibler DC, Marks JG, Shank RC, Slaga TJ, Snyder PW, and Andersen FA. Final report. Methyl acetate, simple acetate esters, acetic acid and salts, and related alcohols as used in cosmetics. 2010. Available from the Cosmetic Ingredient Review, 1101 17th St., NW, Ste 412, Washington DC 20036; [www.cir-safety.org](http://www.cir-safety.org).
55. Andersen FA (ed). Final report on the safety assessment of L-ascorbic acid, calcium ascorbate, magnesium ascorbate, magnesium ascorbyl phosphate, sodium ascorbate, and sodium ascorbyl phosphate as used in cosmetics. *Int J Toxicol*. 2005;24:(Suppl 2):51-111.
56. Johnson WJ, Bergfeld WF, Belsito DV, Hill RA, Klaassen CD, Leibler DC, Marks JG, Shank RC, Slaga TJ, Snyder PW, and Andersen FA. Amended final safety assessment. Benzyl alcohol and benzoic acid and its salts and benzyl ester. 2011. Available from the Cosmetic Ingredient Review, 1101 17th St NW, Ste 412, Washington DC 20036; [www.cir-safety.org](http://www.cir-safety.org).
57. Andersen FA (ed). Final report on the safety assessment of biotin. *Int J Toxicol*. 2001;20:(Suppl 4):1-12.
58. Elder RL (ed). Final report on the safety assessment of cholesterol. *J Am Coll Toxicol*. 1986;5:(5):491-516.
59. Fiume MM, Bergfeld WF, Belsito DV, Hill RA, Klaassen CD, Leibler DC, Marks JG, Shank RC, Slaga TJ, Snyder PW, and Andersen FA. 2011. Tentative safety assessment. Citric acid, inorganic citrate salts, and alkyl citrate esters as used in

cosmetics. Available from the Cosmetic Ingredient Review, 1101 17th St, NW, Ste 412, Washington DC 20036; [www.cir-safety.org](http://www.cir-safety.org).

60. Robinson VC, Bergfeld WF, Belsito DV, Hill RA, Klaassen CD, Leibler DC, Marks JG, Shank RC, Slaga TJ, Snyder PW, and Andersen FA. Final report of the Cosmetic Ingredient Review Expert Panel. Safety assessment of fumaric acid and related salts and esters as used in cosmetics. 2009. Available from the Cosmetic Ingredient Review, 1101 17th St., NW, Ste 412, Washington DC 20036; [www.cir-safety.org](http://www.cir-safety.org).
61. Andersen FA (ed). Final report on the safety assessment of glycolic acid, ammonium, calcium, potassium, and sodium glycolates, methyl, ethyl, propyl, and butyl glycolates, methyl, ethyl, propyl, and butyl glycolates, and lactic acid, ammonium, calcium, potassium, sodium, and TEA-lactates, and methyl, ethyl, isopropyl, and butyl lactates, and lauryl, myristyl, and cetyl lactates. *Int J Toxicol*. 1998;17:(Suppl 1):1-234.
62. Andersen FA (ed). Final report on the safety assessment of malic acid and sodium malate. *Int J Toxicol*. 2001;20:(Suppl 1):47-55.
63. Becker LC, Bergfeld WF, Belsito DV, Hill RA, Klaassen CD, Marks JG, Shank RC, Slaga TJ, Snyder PW, and Andersen FA. Final report of the amended safety assessment of myristic acid and its salts and esters as used in cosmetics. *Int J Toxicol*. 2010;29:(Suppl 3):162S-186S.
64. Andersen FA (ed). Final report on the safety assessment of niacinamide and niacin. *Int J Toxicol*. 2005;24:(Suppl 5):1-31.
65. Elder RL (ed). Final report on the safety assessment of oleic acid, lauric acid, palmitic acid, myristic acid, and stearic acid. *J Am Coll Toxicol*. 1987;321:(401).
66. Andersen FA. Annual review of cosmetic ingredient safety assessments - 2004/2005. *Int J Toxicol*. 2006;25:(Suppl 2):1-89.
67. Elder RL (ed). Final report on the safety assessment of panthenol and pantothenic acid. *J Am Coll Toxicol*. 2011;6:(1):139-162.
68. Andersen FA (ed). Safety assessment of salicylic acid, butyloctyl salicylate, calcium salicylate, C12-15 alkyl salicylate, capryloyl salicylic acid, hexyldodecyl salicylate, isocetyl salicylate, isodecyl salicylate, magnesium salicylate, MEA-salicylate, ethylhexyl salicylate, potassium salicylate, methyl salicylate, myristyl salicylate, sodium salicylate, TEA-salicylate, and tridecyl salicylate. *Int J Toxicol*. 2003;22:(Suppl 3):1-108.
69. Fiume MM, Heldreth BA, Bergfeld WF, Belsito DV, Hill RA, Klaassen CD, Leibler DC, Marks JG, Shank RC, Slaga TJ, Snyder PW, and Andersen FA. Final report. Dicarboxylic acid and their salts as used in cosmetics; esters of dicarboxylic acid as used in cosmetics. 2010. Available from the Cosmetic Ingredient Review, 1101 17th St, NW, Ste 412, Washington DC 20036; [www.cir-safety.org](http://www.cir-safety.org).
70. Andersen FA (ed). Final report on the safety assessment of tocopherol, tocopheryl acetate, tocopheryl linoleate, tocopheryl linoleate/oleate, tocopheryl nicotinate, tocopheryl succinate, dioleoyl tocopheryl methylsilanol, potassium ascorbyl tocopheryl phosphate, and tocophersolan. *Int J Toxicol*. 2011;21:(3):51-116.
71. Integrated Laboratory Systems. *trans*-Resveratrol [501-36-0]. Review of toxicological literature. [http://ntp.niehs.nih.gov/ntp/htdocs/Chem\\_Background/ExSumPdf/Resveratrol.pdf](http://ntp.niehs.nih.gov/ntp/htdocs/Chem_Background/ExSumPdf/Resveratrol.pdf). 2002. Date Accessed 2-2-2012.
72. National Toxicology Program. Testing status of resveratrol, CAS No. 501-36-0. <http://ntp.niehs.nih.gov/?objectid=BD45EDD2-123F-7908-7B19C3F53EBD0E3A>. 1-17-2012. Date Accessed 2-7-2012.
73. Williams LD, Burdock GA, Edwards JA, Beck M, and Bausch J. Safety studies conducted on high-purity *trans*-resveratrol in experimental animals. *Food and Chemical Toxicology*. 2009;47:(9):2170-2182.
74. Klinge CM, Risinger KE, Watts MB, Beck V, Eder R, and Jungbauer A. Estrogenic activity in white and red wine extracts. *J Agric Food Chem*. 2003;51:(7):1850-1857.
75. Hallagan JB, Allen DC, and Borzelleca JF. The safety and regulatory status of food, drug and cosmetics colour additives exempt from certification. *Food and Chemical Toxicology*. 1995;33:(6):515-528.
76. Andersen FA, Bergfeld WF, Belsito DV, Hill RA, Klaassen CD, Leibler DC, Marks JG, Shank RC, Slaga TJ, and Snyder PW. Final report of the Cosmetic Ingredient Review Expert Panel. Amended safety assessment of *Calendula officinalis*-derived cosmetic ingredients. *Int J Toxicol*. 2010;29:(4):221S-243S.

77. Integrated Laboratory Systems. Chlorogenic Acid [327-97-9] and Caffeic Acid [331-39-5]. Review of toxicological literature. [http://ntp.niehs.nih.gov/ntp/htdocs/Chem\\_Background/ExSumPdf/ChlorogenicAcid.pdf](http://ntp.niehs.nih.gov/ntp/htdocs/Chem_Background/ExSumPdf/ChlorogenicAcid.pdf). 2012. Date Accessed 2-2-2012.
78. International Agency for Research on Cancer (IARC). Coumarin. <http://monographs.iarc.fr/ENG/Monographs/vol77/mono77-9.pdf>. 2000. Date Accessed 3-16-2012.
79. Subden RE. Testing grapes and wines for naturally occurring mutagenic compounds: A review. *Vitis*. 1987;26:(1):43-56.
80. World Health Organization, International Agency for Research on Cancer. Volume 56. Some Naturally Occurring Substances: Food Items and Constituents, Heterocyclic Aromatic Amines and Mycotoxins. Summary of Data Reported and Evaluation. 8-21-1997. Date Accessed 6-6-2012.
81. Andersen FA (ed). Final report of the amended safety assessment of PEG-5, -10, -16, -25, -30, and -40 Soy Sterol. *Int J Toxicol*. 2004;23:(Suppl 2):23-47.
82. World Health Organization, International Agency for Research on Cancer. Volume 10. Some Naturally Occurring Substances. Summary of Data Reported and Evaluation. 3-22-1998. Date Accessed 6-6-2012.
83. RIFM Expert Panel, Belsito D, Bickers D, Bruze M, Calow P, Greim H, Hanifin JM, Rogers AE, Saurat JH, Sipes IG, and Tagami H. A toxicologic and dermatologic assessment of cyclic and non-cyclic terpene alcohols when used as fragrance ingredients. *Food Chem Toxicol*. 2008;46:S1-S71.
84. Bentivegna SS and Whitney KM. Subchronic 3-month oral toxicity study of grape seed and grape skin extracts. *Food Chem Toxicol*. 2002;40:(12):1731-1743.
85. Wren, A. F., Cleary, M., Frantz, C., Melton, S., and Norris, L. 90-day oral toxicity study of a grape seed extract (IH636) in rats. *J Agric Food Chem*. 2002;50:(7):2180-2192.
86. Becci PJ, Hess FG, Gallo MA, Johnson WD, and Babish JG. Subchronic feeding study of grape colour extract in beagle dogs. *Food Chem Toxicol*. 1983;21:(1):75-77.
87. Patrinely A, Clifford MN, and Ioannides C. Contribution of phenols, quinones and reactive oxygen species to the mutagenicity of white grape juice in the Ames test. *Food Chem Toxicol*. 1996;34:(9):869-872.
88. Arimoto-Kobayashi S, Machida M, Okamoto K, and Yamaguchi A. Evaluation of photo-mutagenicity and photo-cytotoxicity of food coloring agents. *Mutagenesis*. 2005;20:(3):229-233.
89. Alam A, Khan N, Sharma S, Saleem M, and Sultana S. Chemopreventive effect of Vitis vinifera extract on 12-O-tetradecanoyl-13-phorbol acetate-induced cutaneous oxidative stress and tumor promotion in murine skin. *Pharmacol Res*. 2002;46:(6):557-564.
90. BioScreen Testing Services Inc. 2009. Evaluation of one sample Blend 3EL-New (contains 3% Vitis Vinifera (Grape) Fruit Extract (water extract)) utilizing the dermal irritation test method. Unpublished data submitted by the Personal Care Products Council.
91. MB Research Laboratories Inc. 2001. EpiDerm MTT Viability Assay NAB® Grape Extract Contains 10% Vitis Vinifera (Grape) Fruit Extract (water extract). MB Research Project #: MB 01-9685.39. Unpublished data submitted by the Personal Care Products Council.
92. ABICH Srl. 2009. *In vitro* evaluation of the skin irritation potential of Hydrolyzed Grape (vitis vinifera) fruit skin. Report No. REL/0438/2009/IRRO/ELB. Unpublished data submitted by Personal Care Products Council. 14 pages.
93. Clinical Research Laboratories Inc. 2006. An in-use safety evaluation to determine the dermal irritation potential of a cosmetic product or toiletry (after shave product containing 0.15% Vitis Vinifera (Grape) Seed Extract) CRL Study Number CRL66106. Unpublished data submitted by Personal Care Products Council.
94. ABICH Srl. 2009. *In vitro* evaluation of the pro-sensitising potential of Hydrolyzed Grape (vitis vinifera) fruit skin. Report No. REL/0446/2009/ALTOX/ELB. Unpublished data submitted by Personal Care Products Council. 15 pages.
95. Product Investigations Inc. 2007. Determination of an irritating and sensitizing propensities of a foundation containing 0.0239% Vitis Vinifera (Grape) Fruit Extract (tested neat). Unpublished data submitted by Personal Care Products Council.

96. BioScreen Testing Services Inc. 2009. 100 Human Subject repeat insult test patch test skin irritation/ sensitization valuation of Blend 3EL-New (contains 3% Vitis Vinifera (Grape) Fruit Extract (water extract)). Unpublished data submitted by the Personal Care Products Council.
97. Product Investigations Inc. 2002. Determination of an irritating and sensitizing propensities of a cosmetic product containing 6% Vitis Vinifera (Grape) Fruit Extract (10% dilution tested). Unpublished data submitted by Personal Care Products Council.
98. AMA Laboratories. 2002. 50 Human subject repeat insult patch test skin irritation/sensitization evaluation (occlusive patch) NAB® Grape Extract contains 10% Vitis Vinifera (Grape) Fruit Extract (water extract). AMA Reference No.: MS 02-RIPT.C30700.50.APAC. Unpublished data submitted by the Personal Care Products Council.
99. Clinical Research Laboratories Inc. 2010. Repeated insult patch test of a make-up primer containing 0.1% Vitis Vinifera (Grape) Juice. CRL Study Number: CRL84410. Unpublished data submitted by Personal Care Products Council. 20 pages.
100. Clinical Research Services. 2006. Summary of an HRIPT of a hair styling product containing 0.5% Vitis Vinifera (Grape) Juice Extract (row 1 [irritation results] and 3 [sensitization results] of the table). Unpublished data submitted by Personal Care Products Council.
101. RCTS Inc. 2007. Summary of an HRIPT of a body lotion containing 0.0002% Vitis Vinifera (Grape) Seed Extract (Row 2 [irritation results] and 4 [sensitization results] of the table). Unpublished data submitted by Personal Care Products Council.
102. Product Investigations Inc. 2010. Determination of an irritating and sensitizing propensities of a hair conditioner containing 0.1% Vitis Vinifera (Grape) Seed Extract (10% dilution tested). Unpublished data submitted by Personal Care Products Council.
103. TKL Research. 2006. Summary report: Repeated insult patch test of an aftershave lotion containing 0.15% Vitis Vinifera (Grape) Seed Extract. TKL Study No: DS103906-5. Unpublished data submitted by Personal Care Products Council.
104. Product Investigations Inc. 2004. Determination of an irritating and sensitizing propensities of a raw material containing 1% Vitis Vinifera (Grape) Seed Extract (tested neat). Unpublished data submitted by Personal Care Products Council.